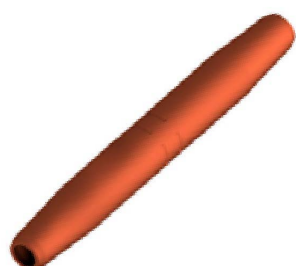


Pole-Line Products & Solutions



In an industry where construction at times needs to be done quickly, Poleline Power Systems offers a full range of automatic connectors. Whether the connectors are needed for steel guy strand or aluminum conductor, we can fill your requirements. Some utilities have also relied on these type connectors for general line construction, not just storm restoration.

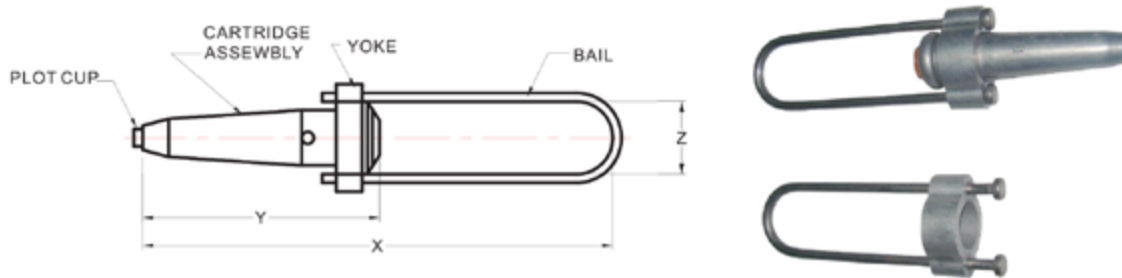
STEEL GUY STRAND CONNECTORS

Our steel guy strand connectors are designed for use on all types of galvanized steel strand, as well as Alumoweld strand. Such as: Siemens-Martin, Utility Grade, High Strength, Extra High Strength, Bell System strand, and Alumoweld. PPS can provide a full range and splices and dead-ends that are all rated at 90% of the cables breaking strength.

In addition, PPS offers a full range of aluminum automatic connectors for use on overhead conductors. These connectors are also offered in deadend type, as well as splice connectors. Each connector has proper color codes to indicate the conductor sizes used in installation. Each connector will also come with factory installed inhibitor. These connectors offer a rated breaking strength at a minimum of 95% of the strand used.

To complete our automatic connector offering, we provide connectors for Copper Conductor. The holding capacity on these connectors vary depending upon the type of copper conductor being spliced. Holding capacities: 85% RBS for solid copper conductors, 80% RBS for stranded copper conductor, and 75% RBS for Copperweld-copper conductors.

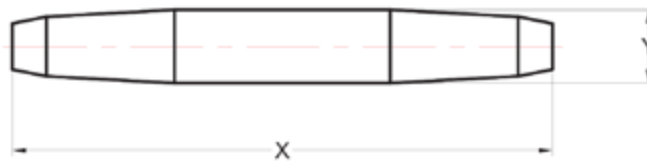
GUY DEADENDS AND GUY SPLICES UNIVERSAL GRADE STRAND



ITEM NO.	BAIL TYPE	DIMENSIONS(INCHES)			WIRE RANGE		WT/100
		X	Y	Z	INCHES	MM	
ACD-316U	A	10.1	4.66	1.63	.145-.215	3.7-5.5	42
ACD-14U	A	10.4	4.88	1.63	.215-.270	5.5-6.7	62
ACD-516U	A	10.7	5.38	1.63	.270-.315	6.7-8	84
ACD-38U	A	12.9	6.47	1.63	.325-.390	8.3-10	132
ACD-716U	A	14.8	6.72	2.06	.392-.455	10-11.6	172
ACD-12U	A	16.3	7.09	2.06	.455-.520	11.6-13.2	204

ABOVE CATALOG NUMBERS REPRESENT STANDARD BAIL SIZE.

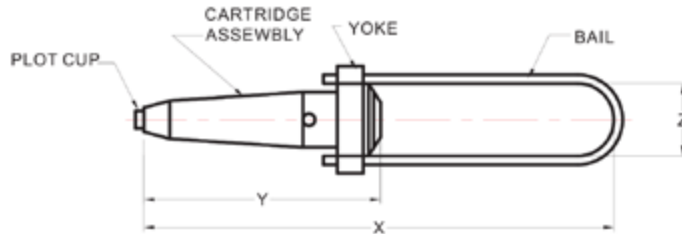
FOR LONG BAIL ADD THE "L" TO THE END OF THE ITEM NUMBER (FOR EXAMPLE, ACD-38UL).



ITEM NO.	TYPE	DIMENSIONS(INCHES)		WIRE RANGE		WT/100
		X	Y	INCHES	MM	
ACS-316U	LINK	7.5	1.03	.145-.215	3.7-5.5	46
ACS-14U	LINK	7.62	1.13	.215-.270	5.5-6.7	60
ACS-516U	LINK	9.28	1.26	.270-.315	6.7-8	84
ACS-38U	LINK	10.6	1.45	.325-.390	8.3-10	132
ACS-716U	LINK	10.6	1.59	.392-.455	10-11.6	160
ACS-12U	LINK	10.8	1.7	.455-.520	11.6-13.2	192

FEATURES:MINIMUM HOLDING STRENGTH IS 90% RBS OF WIRE SPECIFIED.

GUY DEADENDS AND GUY SPLICES ALL GRADE STRAND



ITEM NO.	BAIL TYPE	DIMENSIONS(INCHES)			WIRE RANGE		TENSILE STRENGTH		WT/100
		X	Y	Z	INCHES	MM	KGS	LBS	
ACD-316	A	9.08	3	1.6	.138-.217	3.5-5.5	2000	4400	20
ACD-14	A	9.5	3.97	1.6	.240-.272	6.1-6.9	2700	6000	44
ACD-516	A	9.8	4.45	1.6	.307-.343	7.8-8.7	4500	10080	72
ACD-38	A	11.6	5.2	1.6	.360-.378	9.1-9.6	6300	13860	104
ACD-716	A	14.8	6.69	2.13	.413-.449	10.5-11.4	8600	18720	176

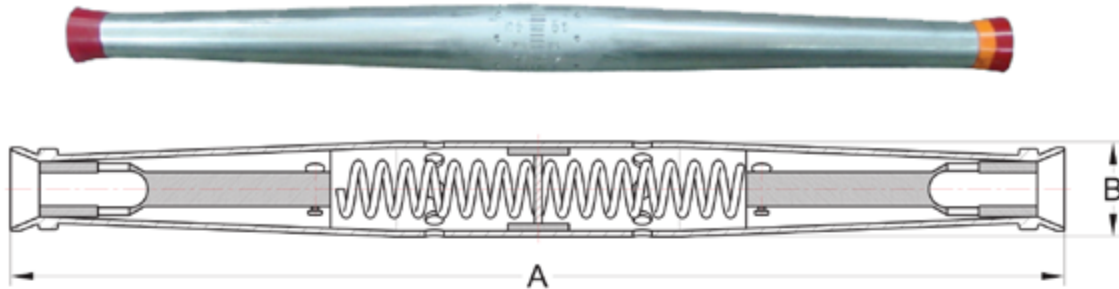
ABOVE CATALOG NUMBERS REPRESENT STANDARD BAIL SIZE.
FOR LONG BAIL ADD THE "L" TO THE END OF THE ITEM NUMBER (FOR EXAMPLE, ACD-38L).



ITEM NO.	TYPE	DIMENSIONS(INCHES)		WIRE RANGE		TENSILE STRENGTH		WT/100
		X	Y	INCHES	MM	KGS	LBS	
ACS-316	LINK	5.2	0.7	.138-.217	3.5-5.5	2000	4400	16
ACS-14	LINK	6.42	0.91	.240-.272	6.1-6.9	2700	6000	30
ACS-516	LINK	7.36	1.11	.307-.343	7.8-8.7	10080	4500	62
ACS-38	LINK	8.27	1.29	.360-.378	9.1-9.6	13860	6300	88
ACS-716	LINK	10.8	1.59	.413-.449	10.5-11.4	18720	8600	155

FEATURES:MINIMUM HOLDING STRENGTH IS 90% RBS OF WIRE SPECIFIED.

AUTOMATIC ALUMINUM LINE SPLICE



CATALOG NUMBER	CONDUCTOR SIZE			CONDUCTOR O.D.		COLOR CODE	DIMENSIONS			
	ACSR ASTM-B232	AAAC ASTM-B399	AAC ASTM-B231	MIN/MAX. INCHES	MIN/MAX. MM		A		B	
							IN.	MM.	IN.	MM.
AALS-4	4	4	4	.220-.250	5.58-6.35	Orange	11.8	300	0.9	23
AALS-42	4-2	4-2	4-2	.220-.320	5.58-8.13	Red-Orange	13.7	350	1	25
AALS-10	1/0	1/0	1/0	.355-.400	9.01-10.16	Yellow	13.7	350	1.1	28
AALS-1020	1/0-2/0	1/0-2/0	1/0-2/0	.355-.470	9.01-11.94	Gray-YELLOW	14.7	373	1.25	32
AALS-20	2/0	2/0	2/0	.400-.470	10.16-11.94	Gray	17.3	440	1.38	35
AALS-30	3/0	3/0	3/0	.450-.530	11.43-13.46	black	18.3	465	1.49	38
AALS-40	4/0	4/0	4/0	.505-.595	12.82-15.12	Pink	22	560	1.73	44
AALS-3040	3/0, 4/0	3/0,4/0	3/0,4/0	.464-.595	11.79-15.11	pink-black	23	588	1.73	44
AALS-266-336	266.8(18/1)	312.8	*336.4	.603-.666	15.31-16.92	Brown	19	480	1.65	42
AALS-336-397	336.4(18/1)	394.5	*397.5**336.4	.659-.724	16.73-18.39	Green	20	510	1.8	46
AALS-266-397	266.8(18/1) -336.4(18/1)	312.8-394.5	*336.4 -397.5**336.4	.603-.724	15.31-18.39	Green-Brown	21.6	550	1.8	46
AALS-397-477	397.5(18/1)	465.4	*477	.720-.795	18.28-20.19	Blue	25	630	2.1	54
AALS-477-556	477(18/1)	559.5	*556.5, 500	.780-.858	19.81-21.80	White	23.2	590	2.1	54
AALS-477L	477(26/7)	-	-	.780-.858	19.81-21.80	White	36	920	2.2	57

ALIPOLELINE POWER SYSTEMS SPLICES ARE RATED TO HOLD A MINIMUM OF 95% OF THE RATED BREAKING STRENGTH OF THE CONDUCTOR.

FEATURES:

- * FACTORY INSTALLED INHIBITOR
- * ANSI C119.4 FULL TENSION CLASS A CONNECTOR
- * COLOR CODED END CAPS FOR EASY CONDUCTOR
- * EASY AND FAST TO SPLICE OVERHEAD CONDUCTORS

MATERIAL:

- * HIGH STRENGTH ALUMINUM ALLOY
- * INSIDE JAWS ARE ALUMINUM ALLOY

