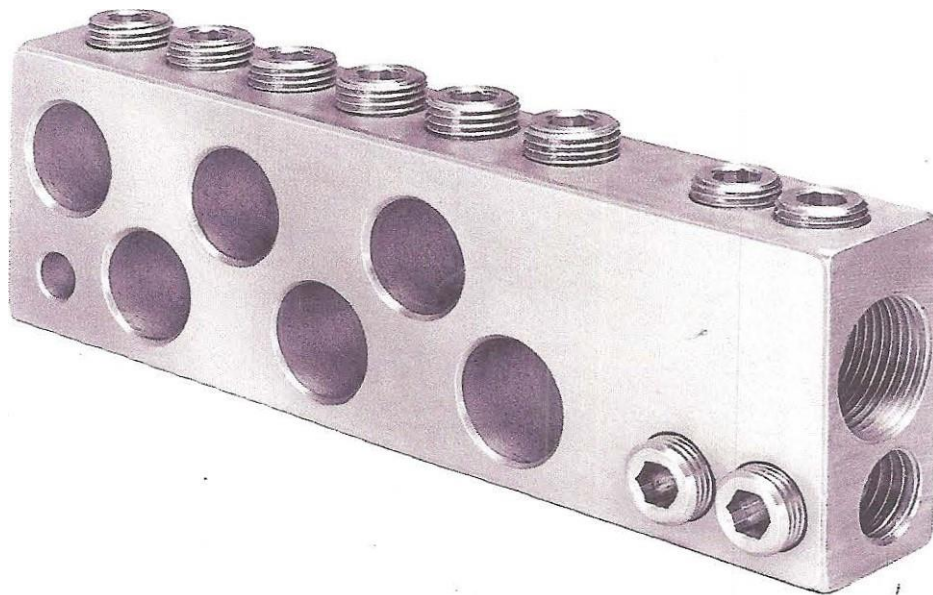


# MEISTER

ELECTRICAL POWER PRODUCTS, LLC.



## Contents

<b>Type PA .....</b>	<b>7</b>
Fabrication Details:.....	8
Available Details:.....	8
Features:.....	9
Available kit with:.....	10
<b>Type PB .....</b>	<b>10</b>
Available with:.....	11
<b>Type PA22, PA33, &amp; PA44 .....</b>	<b>11</b>
Features:.....	11
Fabrication Details:.....	12
Available with:.....	12
<b>Type Street Light Terminals .....</b>	<b>12</b>
Fabrication Details:.....	13
<b>Type P2A1 .....</b>	<b>13</b>
Features:.....	13
Fabrication Details:.....	13
Available with:.....	13
<b>Type P2A2 .....</b>	<b>14</b>
Features:.....	14
Fabrication Details:.....	14
Available with:.....	14
<b>Type VPB .....</b>	<b>15</b>
Features:.....	15
<b>Type 2VPB Double Pedestal.....</b>	<b>16</b>
Fabrication Details:.....	16
<b>Type SPB .....</b>	<b>17</b>
Features:.....	17
Fabrication Details:.....	18
<b>Type VPBR INSULATED PEDESTAL TERMINAL .....</b>	<b>18</b>

Fabrication Details:.....	19
Available with:.....	19
<b>Type PA24 &amp; PA26 .....</b>	<b>19</b>
Fabrication Details:.....	20
Available with:.....	20
<b>Type VPB24 &amp; VPB .....</b>	<b>20</b>
Available with:.....	20
<b>Type CCU.....</b>	<b>21</b>
Features:.....	21
Available with:.....	21
<b>Type S Splicer .....</b>	<b>22</b>
Fig. 1 - Single Screw Per Conductor .....	22
Fig. 2 - Two Screws Per Conductor .....	22
Fabrication Details:.....	22
Available with:.....	23
<b>Splicer: .....</b>	<b>23</b>
Single Screw Per Conductor .....	23
Two Screws Per Conductor .....	23
<b>V DUAL STUD 5/8" – 11 &amp; 1" -14 STUD TRANSFORMER.....</b>	<b>24</b>
Bare Terminal:.....	24
Slip-on Cover: .....	24
Insulated Terminal:.....	24
<b>TYPE 2BTOT OR 2BTT 1-14" STUD.....</b>	<b>25</b>
Bare Terminal:.....	25
Available with:.....	25
Insulated Terminal - Dead Front Only.....	26
<b>TYPE BTOT &amp; BTT 5/8" – STUD .....</b>	<b>26</b>
Bare Terminal.....	27
Available with:.....	27
Screen Light Position:.....	27

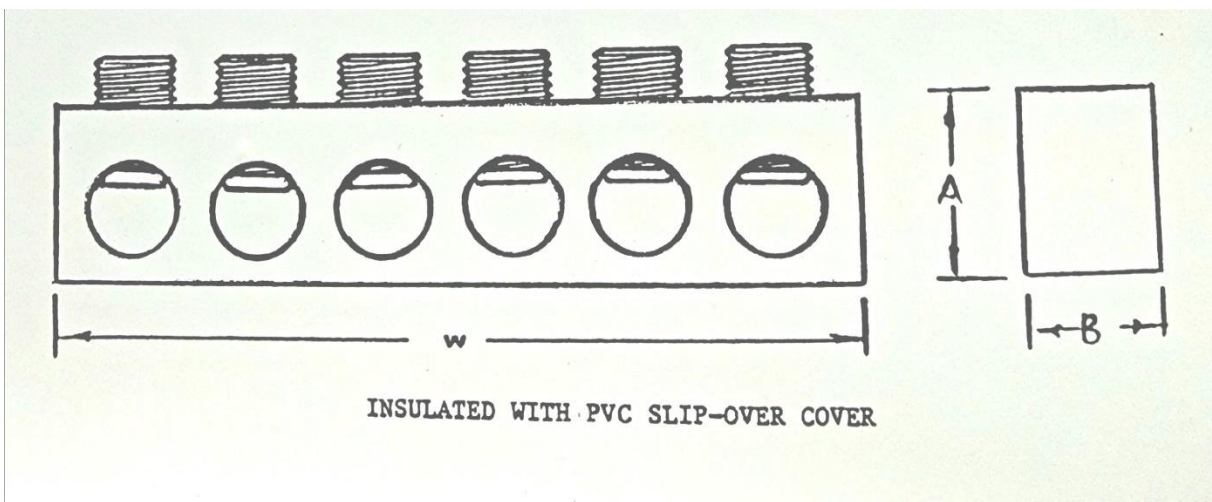
Slip-On Cover.....	28
Insulated Terminal.....	28
<b>MULTIPLE TERMINAL FOR ALUMINUM AND COPPER CONDUCTORS .....</b>	<b>28</b>
Bare Terminal.....	29
Available with:.....	29
Screen Light Position:.....	29
Slip-On Cover.....	29
Insulated Terminal.....	30
<b>TYPE VBTOT &amp; VBTT 5/8" – 11 STUD .....</b>	<b>30</b>
Terminal.....	31
Available Variants: .....	31
Slip-On Cover Options: .....	31
Additional Requirements:.....	31
Insulated Terminal:.....	31
Grommets and Double Sealing Sleeves:.....	31
Catalog No. - Terminal Size: .....	32
<b>TYPE VBTOT &amp; VBTT 1"-14 STUD .....</b>	<b>32</b>
Terminal.....	33
Available Variants: .....	33
Slip-On Cover Options: .....	33
Additional Requirements:.....	33
Insulated Terminal:.....	33
Grommets and Double Sealing Sleeves:.....	33
Catalog No. - Terminal Size: .....	34
<b>TYPE BT .....</b>	<b>34</b>
Catalog No. and Terminal Specifications:.....	34
Terminal.....	35
Available Variants: .....	35
<b>TYPE B2L .....</b>	<b>36</b>
Catalog No. - Conductor Terminal.....	36

Available Configurations:.....	37
Catalog No. - Conductor Terminal.....	37
Available Configurations:.....	38
<b>TYPE BTA ALUMINUM TERMINAL .....</b>	<b>38</b>
Terminal Bar Only .....	38
Length Adjustment: .....	39
St. Lt. Position:.....	39
Complete Terminal Stud Adapter:.....	39
Screw Types: .....	39
Pressure Pad Type: .....	39
Inhibitor Option: .....	39
Adapter Only.....	39
<b>Type L2N .....</b>	<b>40</b>
<b>TYPE TP .....</b>	<b>41</b>
<b>TYPE TZP .....</b>	<b>42</b>
<b>METER TERMINALS .....</b>	<b>43</b>
<b>TYPE T-H &amp; T-N LUGS .....</b>	<b>44</b>
T-H Series: .....	44
<b>TYPE TG ALUMINUM LUGS .....</b>	<b>45</b>
Single Conductor Lugs: .....	46
Two Conductor Lugs: .....	46
Three Conductor Lugs: .....	46
Four Conductor Lugs: .....	46
<b>TYPE TG ALUMINUM LUGS:.....</b>	<b>47</b>
Five Conductor Lugs:.....	47
<b>TYPE BTOT 1.5" INSULATED STUD TERMINALS.....</b>	<b>50</b>
<b>TYPE BTOT 13"-12 INSULATED STUD TERMINALS .....</b>	<b>51</b>
<b>ALCON BEST PRACTICES: .....</b>	<b>52</b>
Torque Application:.....	52
Optimizing Clamping Force:.....	52

User Control - Torque Application:.....	52
Manufacturer's Role - Design Function: .....	52
Clamping Force Analysis:.....	53
Pressure Area Design:.....	53
Calculation of Clamping Force per Inch: .....	53
Optimal Clamping Force Values:.....	53
Considerations for Vise Types:.....	54
<b>Optimal Screw and Clamp Design Considerations .....</b>	<b>54</b>
Bail Point Screw:.....	54
Parallel Groove Clamp (2 Grooves, 2" Long, 3,000 lbs. Force):.....	54
Vise Types (e.g., Two-Piece Hot Line Clamps):.....	54
Test Specifications:.....	54
Design Considerations for High-Fault Areas:.....	54
<b>ALCON, INC. Policy: .....</b>	<b>55</b>

## Type PA

### ALUMINUM PEDESTAL TERMINAL FOR COPPER and ALUMINUM CONDUCTORS



CATALOG NO.	COND. RANGE	NO. CONDS.	SCREW SIZE	W	A	B	WEIGHT PERC	COVER CAT. NO.
PA2-250	250-6	2	5/8-18	1.9	1.141	.903	14	-
PA3-250	250-6	3	5/8-18	2.7	1.141	.903	20	CVA
PA4-250	250-6	4	5/8-18	3.5	1.141	.903	27	CVA
PA5-250	250-6	5	5/8-18	4.4	1.141	.903	32	CVB
PA6-250	250-6	6	5/8-18	5.1	1.141	.903	38	CVB
PA8-250	250-6	8	5/8-18	6.7	1.141	.903	50	CVE
PA2-250-H	250-6	2	9/16-18	2.0	1.141	.903	17	-
PA3-250-H	250-6	3	9/16-18	3.0	1.141	.903	25	-
PA4-250-H	250-6	4	9/16-18	4.0	1.141	.903	33	-
PA5-250-H	250-6	5	9/16-18	5.0	1.141	.903	42	CVD
PA6-250-H	250-6	6	9/16-18	6.0	1.141	.903	50	CVD
PA8-250-H	250-6	8	9/16-18	8.0	1.141	.903	66	CVF
PA2-350	350-6	2	5/8-18	2.0	1.375	1.00	18	CVA
PA3-350	350-6	3	5/8-18	2.9	1.375	1.00	26	CVB
PA4-350	350-6	4	5/8-18	3.8	1.375	1.00	34	CVB
PA5-350	350-6	5	5/8-18	4.8	1.375	1.00	42	CVC
PA6-350	350-6	6	5/8-18	5.7	1.375	1.00	50	CVF
PA8-350	350-6	8	5/8-18	7.6	1.375	1.00	66	-

CATALOG NO.	COND. RANGE	NO. CONDS.	SCREW SIZE	W	A	B	WEIGHT PERC	COVER CAT. NO.
PA2-500	500-2	2	3/4-16	2.5	1.500	1.00	28	-
PA3-500	500-2	3	3/4-16	3.6	1.500	1.00	39	CVD
PA4-500	500-2	4	3/4-16	4.8	1.500	1.00	51	CVD
PA5-500	500-2	5	3/4-16	5.9	1.500	1.00	63	CVE
PA6-500	500-2	6	3/4-16	7.0	1.500	1.00	75	CVF
PA8-500	500-2	8	3/4-16	9.3	1.500	1.00	98	-
PA2-750	750-1/0	2	3/4-16	2.9	1.750	1.188	41	-
PA3-750	750-1/0	3	3/4-16	4.3	1.750	1.188	58	-
PA4-750	750-1/0	4	3/4-16	5.6	1.750	1.188	76	-
PA5-750	750-1/0	5	3/4-16	6.9	1.750	1.188	93	-
PA6-750	750-1/0	6	3/4-16	8.2	1.750	1.188	110	-
PA8-750	750-1/0	8	3/4-16	10.8	1.750	1.188	145	-

#### Fabrication Details:

- Fabricated from 6061-T6 Aluminum.
- Screw Alloy 6262-T9.

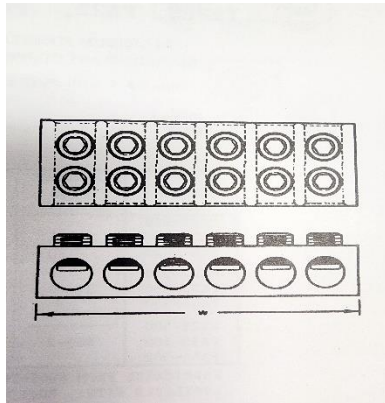
#### Available Details:

- Round Bottom Screws — Add Suffix "RB" to Catalog No.
- Flat Bottom Screws — Add Suffix "F" to Catalog No.
- Disc Pressure Pads — Add Suffix "D" to Catalog No.
- Add Suffix "G" for Inhibitor.



## Type 2PA

### DOUBLE ALUMINUM PEDESTAL TERMINAL ALUMINUM and COPPER CONDUCTORS



Insulated with PVC Slip-over Cover.

#### Features:

- Aluminum and copper conductors are insulated with PVC slip-over cover.

6CATALOG 8NO.	NO. OF CONDS.	CONDUCTOR AWC- MCM	WIDTH (w)	WEIGHT PERC	PVC COVER CAT. NO.
2PA3-250	3	250-6	2.7	39	CVD
2PA4-250	4	250-6	3.5	52	CVA
2PA5-250	5	250-6	4.4	75	CVB
2PA6-250	6	250-6	5.1	88	CVB
2PA8-250	8	250-6	6.7	105	CVE
2PA3-350	3	350-6	2.9	45	CVA
2PA4-350	4	350-6	3.8	60	CVB
2PA5-350	5	350-6	4.8	85	CVB
2PA6-350	6	350-6	5.7	100	CVC
2PA8-350	8	350-6	7.5	120	CVE
2PA3-500	3	500-2	3.6	75	CVD
2PA4-500	4	500-2	4.8	97	CVD
2PA5-500	5	500-2	5.9	125	CVD
2PA6-500	6	500-2	7.0	155	CV2E
2PA8-500	8	500-2	9.3	200	CV2F
2PA3-750	3	750-1/0	4.3	170	CV2F
2PA4-750	4	750-1/0	5.6	225	CV2F
2PA5-750	5	750-1/0	6.9	260	CV2F

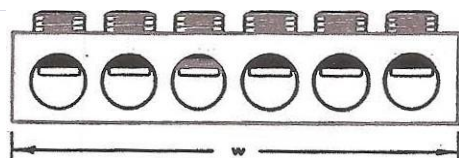
6CATALOG 8NO.	NO. OF CONDS.	CONDUCTOR AWC- MCM	WIDTH (w)	WEIGHT PERC	PVC COVER CAT. NO.
2PA6-750	6	750-1/0	8.2	320	CV2F
2PA8-750	8	750-1/0	10.9	425	CVW

Available kit with:

- Round Bottom Screws — Add Suffix "RB" to Catalog No.
- Flat Bottom Screws — Add Suffix "F" to Catalog No.
- Disc Pressure Pads — Add Suffix "D" to Catalog No.
- For Grease Inhibitor — Add Suffix "G" to Catalog No.

## Type PB

### ALUMINUM POESTAL TERMINAL with CLOSED-END CONDUCTOR OUTLETS



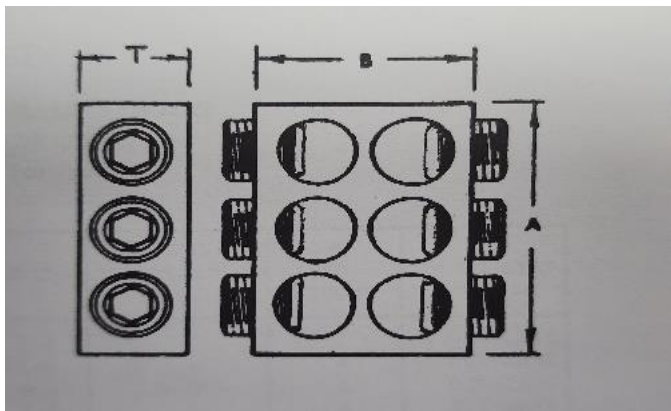
CATALOG NO.	CONDUCTOR RANGE (AWC-MCM)	NUMBER OF CONDS.	W	WEIGHT PERC	PVC COVER CAT. NO.
PB4-250	250-6	4	3.5	44	CVA
PB5-250	250-6	5	4.4	55	CVE
PB6-250	250-6	6	5.1	66	CVB
PB4-350	350-6	4	3.8	50	CVB
PB5-350	350-6	5	4.8	62	CVB
PB6-350	350-6	6	5.7	75	CVC
PB4-500	500-2	4	4.8	63	CVD
PB5-500	500-2	5	5.9	78	CVD
PB6-500	500-2	6	7.0	93	CVE

- [Fabrication Details:](#)
- Fabricated from 6061-T6 Aluminum.
- Screw Alloy 6262-T9.

[Available with:](#)

- Round Bottom Screw - Add "RB" to Catalog No.
- Flat Bottom Screw - Add "F" to Catalog No.
- Disc Pressure Pad - Add "D" to Catalog No.
- All screws have 5/16" hex wrench sockets.
- Add suffix "G" for Inhibitor.

## Type PA22, PA33, & PA44 – ALUMINUM PEDESTAL TERMINAL



[Features:](#)

- Aluminum and copper conductors are insulated with PVC slip-over cover.

CATALOG NO.	CONDUCTOR RANGE	NO. OF CONDS.	A	B	T	SCREW SIZE	PVC COVER.	WEIGHT PERC
PA22-250	250-6	4	1.7	2.0	1.0	5/8-18	PVH	26
PA33-250	250-6	6	2.5	2.0	1.0	5/8-18	PVJ	39
PA44-250	250-6	8	3.3	2.0	1.0	5/8-18	PVK	52
PA22-350	350-6	4	2.0	2.5	1.0	5/8-18	PVJ	31
PA33-350	350-6	6	3.0	2.5	1.0	5/8-18	PVK	46
PA44-350	350-6	8	4.0	2.5	1.0	5/8-18	-	62
PA22-500	500-2	4	2.5	3.0	1.0	11/16-16	PVL	100
PA33-500	500-2	6	3.6	3.0	1.0	11/16-16	PVH	150

CATALOG NO.	CONDUCTOR RANGE	NO. OF CONDS.	A	B	T	SCREW SIZE	PVC COVER.	WEIGHT PERC
PA44-500	500-2	8	4.8	3.0	1.0	11/16-16	-	200

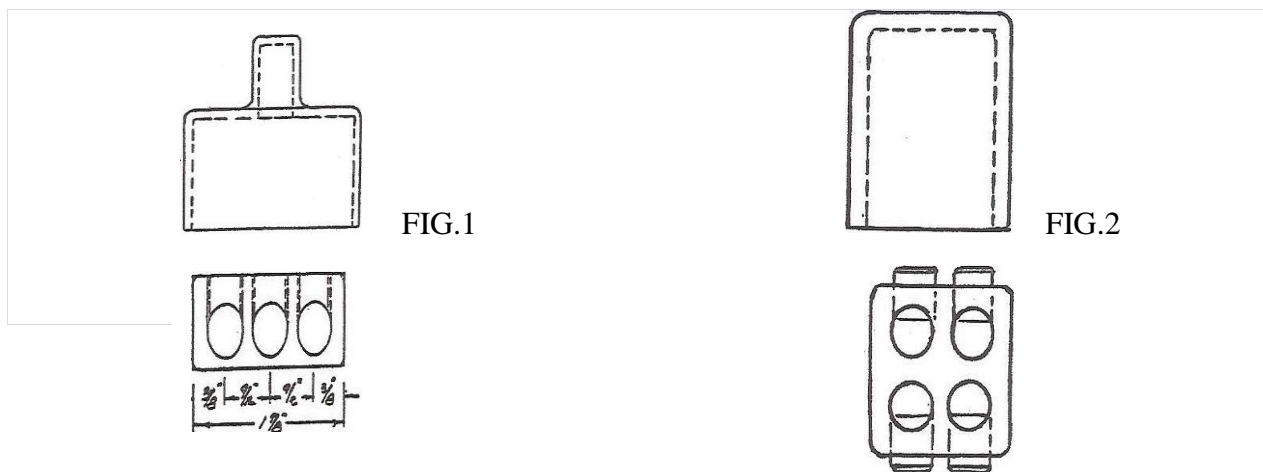
#### Fabrication Details:

- Fabricated from 6061-T6 aluminum for conductors.
- Screw made from alloy 6262-T9.

#### Available with:

- Round Bottom Screw - Add "RB" to Catalog No.
- Flat Bottom Screw - Add "F" to Catalog No.
- Disc Pressure Pad - Add "D" to Catalog No.
- All screws have 5/16" hex wrench sockets.
- Add Suffix "G" for Inhibitor.

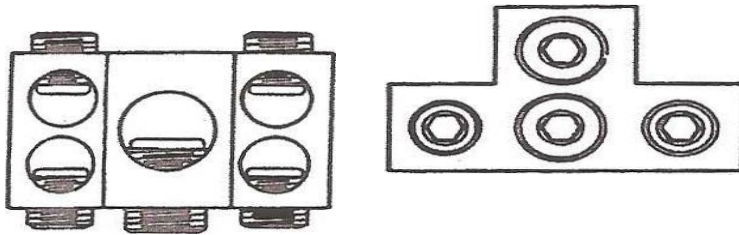
## Type Street Light Terminals



CATALOG NUMBER	FIGURE	CONDUCTOR RANGE AWG	PVC COVER
PA3-O	1	14-1/0	PA3-OC
PA22-O	2	14-1/0	PVG
PA33-O	-	14-1/0	PA33-OC

**Fabrication Details:**

- Fabricated from 6061-T6 Aluminum.
- Add Suffix "G" for Grease.

**Type P2A1 - Aluminum Pedestal Terminal Aluminum and Copper Conductor****Features:**

- One main conductor and 4 or 6 service conductors
- Aluminum and copper conductors
- Insulated with PVC slip-over cover.

CATALOG NO.	MAIN CONDUCTOR RANGE AWG-MCM	SERVICE CONDUCTORS NO.	SERVICE CONDUCTOR RANGE	WEIGHT PERC	PVC COVER CAT. NO.
P2A14-250-250	250-6	4	250-6	64	PVK
P2A16-250-250	250-6	6	250-6	6185	PVL
P2A14-350-250	350-6	4	250-6	8361	PVK
P2A16-350-250	350-6	6	250-6	5983	PVL
P2A14-500-250	500-3/0	4	250-6	8159	PVK
P2A16-500-250	500-3/0	6	250-6	-81	PVL

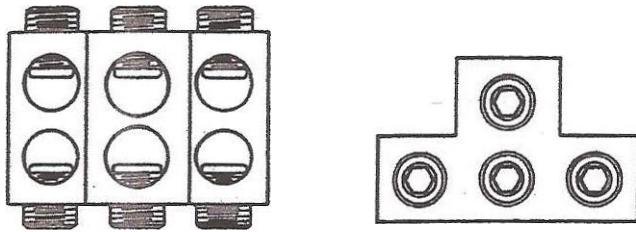
**Fabrication Details:**

- Fabricated from 6061-T6 aluminum.
- Screw Alloy 6262-T9.

**Available with:**

- Round Bottom Screws — Add suffix "RB"
- Flat Bottom Screws — Add suffix "F"
- Disc Pressure Pads — Add suffix "D"
- Add suffix "G" for Inhibitor.

## Type P2A2 - ALUMINUM PEDESTAL TERMINAL



### Features:

- Two main conductors and 4 or 6 service conductors
- Aluminum and copper conductors
- Insulated with PVC slip-over cover.

CATALOG NO.	TWO MAIN COND. RANGE	MAINS COND. NO.	SERVICE CONDUCTORS NO.	SERVICE CONDUCTOR RANGE	WEIGHT PERC	PVC COVER
P2A24-250-250	250-6	6	4	250-6	66	PVK
P2A26-250-250	250-6	6	6	250-6	72	PVL
P2A24-350-250	350-6	4	6	250-6	66	PVK
P2A26-350-250	350-6	6	6	250-6	72	PVL
P2A24-500-250	500-3/0	6	4	250-6	80	PVL
P2A26-500-250	500-3/0	6	6	250-6	86	PVL

### Fabrication Details:

- Fabricated from 6061-T6 aluminum.
- Screw Alloy 6262-T9.

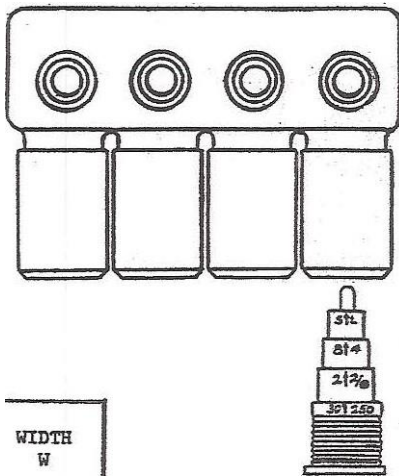
### Available with:

- Round Bottom Screws — Add suffix "RB"
- Flat Bottom Screws — Add suffix "F"
- Disc Pressure Pads — Add suffix "D"

## Type VPB - INSULATED SUBSURFACE TERMINAL

### INSULATED SUBSURFACE TERMINAL ALUMINUM and COPPER CONDUCTORS

Terminal: — Type PB with PVC Insulation. Complete with Nordel closure plugs for scrap.' openings, grommets, and double-sealing sleeves for all conductor openings.



Features:

- Type PB with PVC Insulation
- Complete with Nordel closure plugs for unused openings
- Grommets and double-sealing sleeves for all conductor openings.

CATALOG NO.	NUMBER OD CONDUCTS	CONDUCTOR RANGE	WIDTH
VPB-2-250	2	250-6	2.2
VPB-3-250	3	250-6	3.2
VPB-4-250	4	250-6	4.2
VPB-5-250	5	250-6	5.2
VPB-6-250	6	250-6	6.2
VPB-8-250	8	250-6	8.2
VPB-2-350	2	350-6	2.5
VPB-3-350	3	350-6	3.6
VPB-4-350	4	350-6	4.7
VPB-5-350	5	350-6	5.8
VPB-6-350	6	350-6	7.0
VPB-8-350	8	350-6	9.3

VPB-2-500	2	500-2	2.8
VPB-3-500	3	500-2	4.1
VPB-4-500	4	500-2	5.4
VPB-5-500	5	500-2	6.7
VPB-6-500	6	500-2	8.0
VPB-8-500	8	500-2	10.6
VPB-2-750	2	750-0	3.2
VPB-3-750	3	750-0	4.8
VPB-4-750	4	750-0	6.5
VPB-5-750	5	750-0	8.1
VPB-6-750	6	750-0	9.7
VPB-8-750	8	750-0	13.0

750-0

### Type 2VPB Double Pedestal

(2 Set Screws per conductor)

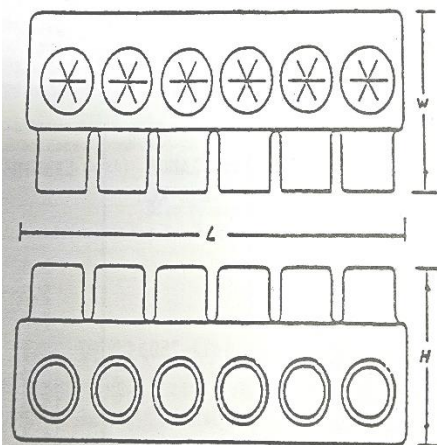
CATALOG NO.	NO. OF CONDS.	CONDUCTOR RANGE	WEIGHT PERC
2VPB-2-500	2	500-2	2.8
2VPB-3-500	3	500-2	4.1
2VPB-4-500	4	500-2	5.4
2VPB-5-500	5	500-2	6.7
2VPB-6-500	6	500-2	8.0
2VPB-8-500	8	500-2	10.6
2VPB-2-750	2	750-0	3.2
2VPB-3-750	3	750-0	4.8
2VPB-4-750	4	750-0	6.5
2VPB-5-750	5	750-0	8.1
2VPB-6-750	6	750-0	9.7
2VPB-8-750	8	750-0	13.0

#### Fabrication Details:

- Fabricated from 6061-T6 Aluminum.
- Add Suffix "G" for Grease.



## Type SPB – CLEAR INSULATED PEDESTAL TERMINAL



Star Cut Wrench Opening for Dead Front Applications

Completely encapsulated in clear PVC

- No screw caps to fail out.
- Visual dead applications
- Disc pressure pads give twice the clamping force of direct contact screws.

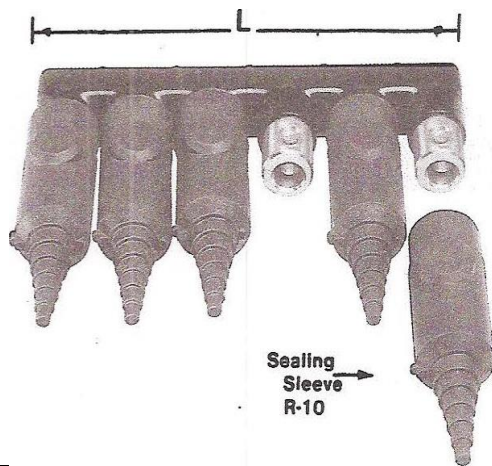
CATALOG NO.	NO. OF CONDS.	CONDUCTOR RANGE	LENGTH	WIDTH	HEIGHT
SPB4-250D	4	250-6	4.2	2.625	2.125
SPB5-250D	5	250-6	5.2	2.625	2.125
SPB6-250D	6	250-6	6.2	2.625	2.125
SPB8-250D	8	250-6	8.2	2.625	2.125
SPB4-350D	4	350-6	4.9	2.625	2.250
SPB5-350D	5	350-6	6.1	2.625	2.250
SPB6-350D	6	350-6	7.3	2.625	2.250
SPB8-350D	8	350-6	9.7	2.625	2.250
SPB4-500D	4	500-2	5.5	2.625	2.750
SPB5-500D	5	500-2	6.8	2.625	2.750
SPB6-500D	6	500-2	8.1	2.625	2.750
SPB8-500D	8	500-2	10.8	2.625	2.750

### Features:

- Completely encapsulated in clear PVC
- No screw caps to fail out.
- Visual dead applications
- Disc pressure pads give twice the clamping force of direct contact screws.

### Fabrication Details:

- Fabricated from 6061-T6 Aluminum.
- Screw Alloy 6262-T9.
- Add Suffix "G" for Grease.



### Type VPBR INSULATED PEDESTAL TERMINAL

- Fabricated from 6061-T6 w/6262-T9 ALUM. set screws. Insulated with PVC — nominal thickness .125" — Insulation Rating — 400 volts/mil
- Sealing Sleeve EPDM Rubber— Interchangeable with other makes.
- I was tested at 15KV.

CATALOG NO.	NUMBER OF CONDUCTORS	CONDUCTOR AWG-KCM	LENGTH
VPBR2-250	2	14-250	3.4
VPBR3-250	3	14-250	5.2
VPBR4-250	4	14-250	7.0
VPBR5-250	5	14-250	8.9
VPBR6-250	6	14-250	10.7
VPBR7-250	7	14-250	12.6
VPBR8-250	8	14-250	14.4
VPBR2-350	2	14-350	3.4
VPBR3-350	3	14-350	5.2
VPBR4-350	4	14-350	7.0
VPBR5-350	5	14-350	8.9
VPBR6-350	6	14-350	10.7
VPBR7-350	7	14-350	12.6
VPBR8-350	8	14-350	14.4
VPBR2-500	2	12-500	3.4
VPBR3-500	3	12-500	5.2

CATALOG NO.	NUMBER OF CONDUCTORS	CONDUCTOR AWG-KCM	LENGTH
VPBR4-500	4	12-500	7.0
VPBR5-500	5	12-500	8.9
VPBR6-500	6	12-500	10.7
VPBR7-500	7	12-500	12.6
VPBR8-500	8	12-500	14.4

#### Fabrication Details:

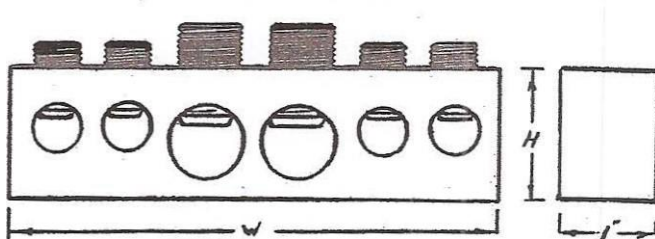
- Fabricated from 6061-T6 aluminum.
- Screw Alloy 6262-T9.

#### Available with:

- Round Bottom Screws — Add suffix "RB"
- Flat Bottom Screws — Add suffix "F"
- Disc Pressure Pads — Add suffix "D"
- Add suffix "G" for Inhibitor.

## Type PA24 & PA26

### ALUMINUM PEDESTAL TERMINAL ALUMINUM and COPPER CONDUCTORS



CATALOG NO.	MAINS NO. COND.	MAINS COND. RANGE	SERVICE NO. COND.	SERVICE COND. RANGE	WIDTH
VPB24-350-250	2	350-6	4	250-6	5.7
VPB26-350-250	2	350-6	6	250-6	7.0
VPB24-500-250	2	500-2	4	500-2	5.9

CATALOG NO.	MAINS NO. COND.	MAINS COND. RANGE	SERVICE NO. COND.	SERVICE COND. RANGE	WIDTH
VPB26-500-250	2	500-2	6	500-2	7.6

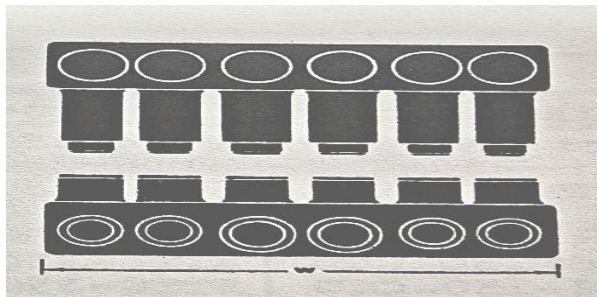
#### Fabrication Details:

- Fabricated from 6061-T6 aluminum.
- Screw Alloy 6262-T9.

#### Available with:

- Round Bottom Screws — Add Suffix "RB" to Catalog No.
- Flat Bottom Screws — Add Suffix "F" to Catalog No.
- Disc Pressure Pads — Add Suffix "D" to Catalog No.
- Add Suffix "G" for Inhibitor.

## Type VPB24 & VPB Submersible Insulate Two Mains 4 Or 6 Service



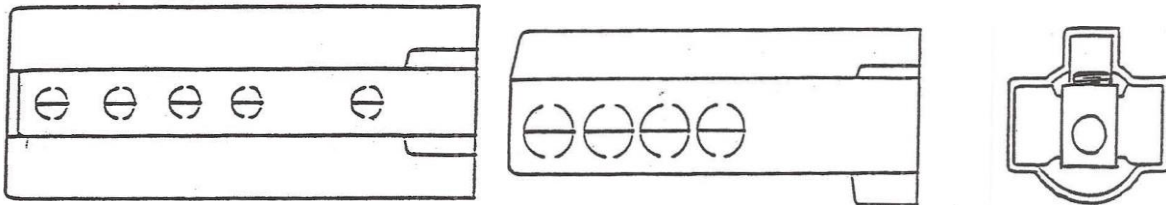
CATALOG NO.	MAINS		SERVICES		WIDTH	HEIGHT	WEIGHT PERC	COVER
	NO.	COND. RANGE	NO.	COND. RANGE				
PA24-350-250	2	350-6	4	250-6	5.5	1.375	45	PVC
PA26-350-250	2	350-6	6	250-6	6.8	1.375	61	PVE
PA24-500-250	2	500-2	4	250-6	5.7	1.515	53	PVC
PA26-500-250	2	500-2	6	250-6	7.4	1.515	89	PVF

#### Available with:

- Round Bottom Screws — Add Suffix "RB" to Catalog No.
- Flat Bottom Screws — Add Suffix "F" to Catalog No.
- Disc Pressure Pads — Add Suffix "D" to Catalog No.

- Add Suffix "G" for Inhibitor.

## Type CCU Universal Transformer Terminal for 5/8" -11 Stud Slip fit or Screw with Left or Right Covers



### Features:

1. Rotate Away Wrench and Openings
2. Available for Right or Left Installation
3. Clear Cover for Easy Access
4. Available with Three Types of Screws:

Slip-Fit	Screw-On	No. Cond.	Cond. Range	L	W	H
BTOT4-250-CCU	BTT4-250-CCU	4	250-6	7.3	2.8	2.8
BTOT6-250-CCU	BTT6-250-CCU	6	250-6	9.3	2.8	2.8
BTOT8-250-CCU	BTT8-250-CCU	8	250-6	11.3	2.8	2.8
BTOT4-350-CCU	BTT4-350-CCU	4	350-6	7.3	2.8	2.8
BTOT6-350-CCU	BTT6-350-CCU	6	350-6	9.3	2.8	2.8
BTOT8-350-CCU	BTT8-350-CCU	8	350-6	11.3	2.8	2.8
BTOT4-500-CCU	BTT4-500-CCU	4	500-2	8.0	2.8	2.9
BTOT6-500-CCU	BTT6-500-CCU	6	500-2	10.4	2.8	2.9

### Available with:

- Round Bottom Screws — Add Suffix "RB" to Catalog No.
- Flat Bottom Screws — Add Suffix "F" to Catalog No.

- Disc Pressure Pads — Add Suffix "D" to Catalog No.
- Add Suffix "G" for Inhibitor.

## Type S Splicer - ALUMINUM SPLICER-REDUCER

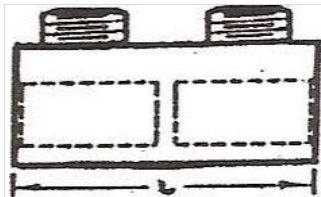


FIG. 1

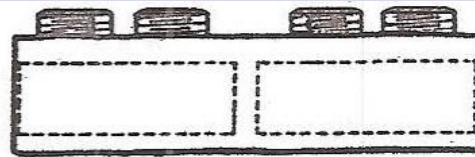


FIG. 2

- **Conductor Type:** ALUMINUM and COPPER CONDUCTORS
- **Barrier:** Solid Barrier in Center

Fig. 1- Single Screw Per Conductor

CATALOG	FIGURE	CONDUCTOR RANGE (KCM-AWG)	LENGTH
S-2	1	2-12	2.0
S-0	1	1/0-12	2.0
S-40	1	4/0-6	2.1
S-250	1	250-6	2.2
S-350	1	350-6	2.7
S-500	1	500	3.0

Fig. 2- Two Screws Per Conductor

CATALOG	FIGURE	CONDUCTOR RANGE (KCM-AWG)	LENGTH
S2-250-250	2	250-6	4.2
S2-350-350	2	350-6	4.6
S2-500-500	2	500-2	5.1
S2-750-750	2	750-250	5.9

### Fabrication Details:

- Fabricated from 6061—T6 aluminum.

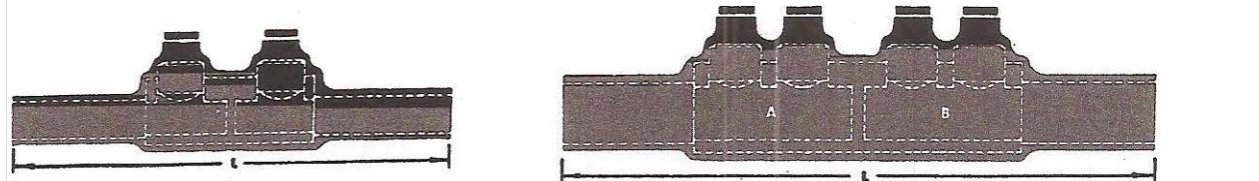
- Screw Alloy 6262—T9.

Available with:

- Round Bottom Screws — Add suffix "RB"
- Flat Bottom Screws — Add suffix "F"
- Disc Pressure Pads — Add suffix "D"
- Add suffix "G" for Inhibitor.

## Splicer: - TYPE S CONNECTOR

### TYPE S SPLICER



### SINGLE SCREW PER CONDUCTOR

### TWO SCREWS PER CONDUCTOR

#### Single Screw Per Conductor

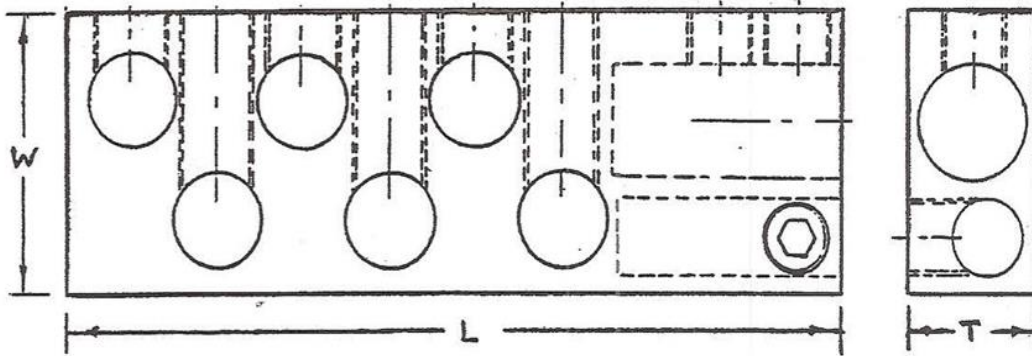
CATALOG	CONDUCTOR RANGE (KCM-AWG)	LENGTH
SI-250	250-6	5.7
SI-350	350-6	6.2
SI-500	500-2	6.5

#### Two Screws Per Conductor

CATALOG	CONDUCTOR RANGE (KCM-AWG)	LENGTH
S21-250-250	250-6	7.7
S21-350-350	350-6	8.1
S21-500-500	500-2	8.6
S21-750-750	750-250	9.4

- Insulated with PVC and supplied complete with Nordel closure plugs for screw openings, grommets, and double sealing sleeves for conductor openings.

## V DUAL STUD 5/8" – 11 & 1"-14 STUD TRANSFORMER BAR TERMINAL BARE OR INSULATED DEAD FRONT ONLY



Slip-Fit	Screw Size	No. Cond.	Wire Range	L	W	H
BTOT6V-350-58-S1	5/8-18	6	350-6	6.75	2.5	1.25
BTOT8V-350-58-S1	5/8-18	8	350-6	8.25	2.5	1.25
BTOT6V-500-58-S1	11/16-16	6	500-2	7.4	2.5	1.25
BTOT8V-500-58-S1	11/16-16	8	500-2	9.0	2.5	1.25
BTOT4V-750-58-S1	3/4-16	4	750-0	8.3	2.5	1.25

### Bare Terminal:

- Fabricated from 6061—T6 Aluminum.
- Screw Alloy 6262—T9.
- All Socket Set Screws Accept a 5/16" Hex Allen Wrench.
- Available only with Disc Pressure Pads.
- Add Suffix "G" for Inhibitor.
- For Street Light Position, change Catalog Number as follows: e.g., BTOT6V becomes BTOT61V - for Street Light addition.

### Slip-on Cover:

- Add Suffix "SO" to Catalog Number for Black Cover.
- Add Suffix "SOC" for Clear Cover.

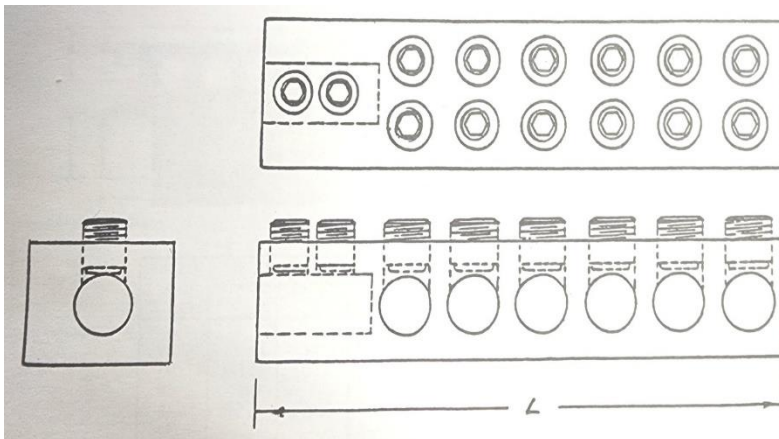
### Insulated Terminal:

- Add Suffix "DC" to Catalog Number for Black PVC Insulation.
- Add Suffix "DCC" to Catalog Number for Clear PVC Insulation.



## TYPE 2BTOT OR 2BTT 1-14" STUD

### BARE OR INSULATED DOUBLE SCREW MULTIPLE TERMINAL SLIP-ON OR THREAD-ON



SLIP-FIT	THREAD-ON	NO. OF COND.	CONDUCTOR RANGE	LENGTH
2BTOT3-500-S1	2BTT3-500-S1	3	500-2	5.1
2BTOT4-500-S1	2BTT4-500-S1	4	500-2	6.1
2BTOT6-500-S1	2BTT6-500-S1	6	500-2	8.8
2BTOT8-500-S1	2BTT8-500-S1	8	500-2	11.1
2BTOT3-750-S1	2BTT3-750-S1	3	750-0	6.1
2BTOT4-750-S1	2BTT4-750-S1	4	750-0	7.4
2BTOT6-750-S1	2BTT6-750-S1	6	750-0	10.0
2BTOT8-750-S1	2BTT8-750-S1	8	750-0	12.6

#### Bare Terminal:

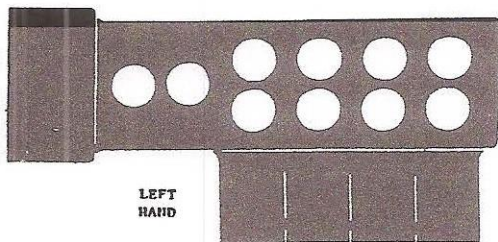
- Fabricated from 6061—T6 aluminum — Screw alloy 6262—T9 aluminum.
- For street light position, add "I" after the number of conductors, e.g., 2BTOT61-750 SI.

#### Available with:

- Round Bottom Screw—add suffix "ORB."
- Flat Bottom Screw—add suffix "OFB."
- Disc Pressure Pad—add suffix "D."
- Add the suffix "G" for inhibitor.

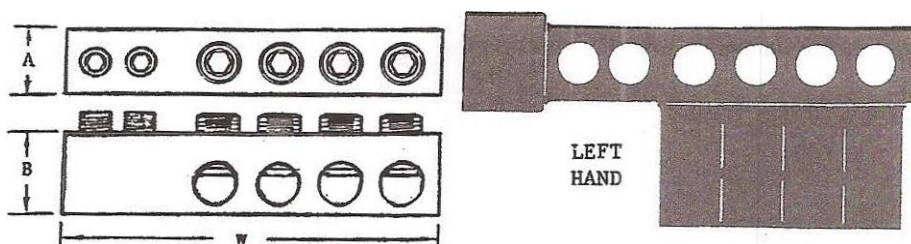
- For a Slip-On insulating cover — Order separately, e.g., 2BTOT6-750 SO cover for Black PVC cover or 2BTOT6-750 SOC for Clear PVC cover.

Insulated Terminal- Dead Front Only:



- For Black PVC Insulation, add the suffix "DC" to Catalog No.
- For Clear PVC Insulation, add the suffix "DCC" to Catalog No.
- Specify Right- or Left-Hand Tightening
- (Left Hand Illustrated).

**TYPE BTOT & BTT 5/8" – STUD** ALUMINUM MULTIPLE TERMINAL ALUMINUM AND COPPER CONDUCTORS



SLIP-ON	THREAD-ON	NO.COND.	RANGE	W	A	B	WEIGHT PERC
BTOT2-250	BTT2-250	2	250-6	3.5	BARE	BARE	28
BTOT3-250	BTT3-250	3	250-6	4.3	.903	1.141	34
BTOT4-250	BTT4-250	4	250-6	5.1	INS.	INS	40
BTOT5-250	BTT5-250	5	250-6	5.9	1.25	1.25	46
BTOT6-250	BTT6-250	6	250-6	6.8	1.25	1.25	52
BTOT8-250	BTT8-250	8	250-6	8.4	1.25	1.25	64

SLIP-ON	THREAD-ON	NO.COND.	RANGE	W	A	B	WEIGHT PERC
BTOT2-350	BTT2-350	2	350-6	3.8	BARE	BARE	32
BTOT3-350	BTT3-350	3	350-6	4.7	1.00	1.375	40
BTOT4-350	BTT4-350	4	350-6	5.6	INS	INS	48
BTOT5-350	BTT5-350	5	350-6	6.6	1.25	1.375	56
BTOT6-350	BTT6-350	6	350-6	7.5	1.25	1.375	64
BTOT8-350	BTT8-350	8	350-6	9.3	1.25	1.375	80
BTOT2-500	BTT2-500	2	500-2	4.6	BARE	BARE	52
BTOT3-500	BTT3-500	3	500-2	5.7	1.00	1.515	63
BTOT4-500	BTT4-500	4	500-2	6.8	INS	INS	75
BTOT5-500	BTT5-500	5	500-2	7.9	1.25	1.50	87
BTOT6-500	BTT6-500	6	500-2	9.1	1.25	1.50	99
BTOT8-500	BTT8-500	8	500-2	11.3	1.25	1.50	122
BTOT2-750	BTT2-750	2	750-1/0	5.0	BARE	BARE	77
BTOT3-750	BTT3-750	3	750-1/0	6.3	1.188	1.75	94
BTOT4-750	BTT4-750	4	750-1/0	7.6	INS	INS	112
BTOT5-750	BTT5-750	5	750-1/0	8.9	1.188	1.75	129
BTOT6-750	BTT6-750	6	750-1/0	10.3	1.188	1.75	146
BTOT8-750	BTT8-750	8	750-1/0	13.4	1.188	1.75	171

#### Bare Terminal

- Material: 6061-T6 Aluminum
- Screws: Alloy 6262-T9
- Set Screws: Accepts 5/16" Hex Allen Wrench
- Screw Options: RB (Round Bottom), F or D Style
- Inhibitor Option: Suffix "G2"

#### Available with:

- Round Bottom Screws — Add Suffix "RB" to Catalog No.
- Flat Bottom Screws — Add Suffix "F" to Catalog No.
- Disc Pressure Pads — Add Suffix "D" to Catalog No.
- Add Suffix "G" for Inhibitor.

#### Screen Light Position:

- Modify Catalog Number for Street Light Addition, e.g., BTOT6 becomes BTOT61.

## Slip-On Cover

Customize Your Look:

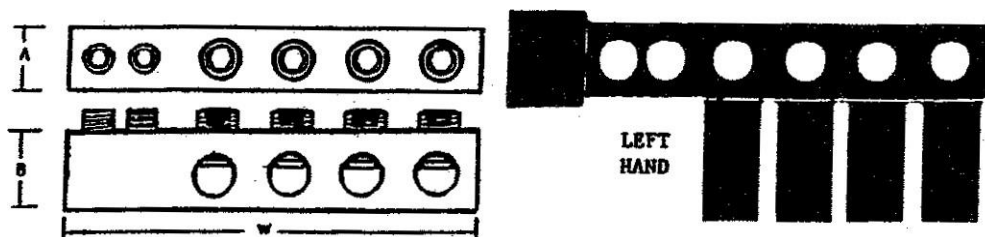
- Black Cover: Suffix "SO"
- Clear Cover: Suffix "SOC"

## Insulated Terminal

Insulation Options:

- Black PVC: Suffix "DC"
- Clear PVC: Suffix "DCC"

## TYPE BTOT &amp; BTT 1"-14 STUD



## MULTIPLE TERMINAL FOR ALUMINUM AND COPPER CONDUCTORS

SLIP-ON	THREAD-ON	NO.COND.	RANGE	W	A	B	WEIGHT PERC
BTOT2-250-S1	BTT2-250-S1	2	250-6	3.5	BARE	BARE	28
BTOT3-250-S1	BTT3-250-S1	3	250-6	4.3	.903	1.141	34
BTOT4-250-S1	BTT4-250-S1	4	250-6	5.1	INS.	INS	40
BTOT5-250-S1	BTT5-250-S1	5	250-6	5.9	1.25	1.25	46
BTOT6-250-S1	BTT6-250-S1	6	250-6	6.8	1.25	1.25	52
BTOT8-250-S1	BTT8-250-S1	8	250-6	8.4	1.25	1.25	64

SLIP-ON	THREAD-ON	NO.COND.	RANGE	W	A	B	WEIGHT PERC
BTOT2-350-S1	BTT2-350-S1	2	350-6	3.8	BARE	BARE	32
BTOT3-350-S1	BTT3-350-S1	3	350-6	4.7	1.00	1.375	40
BTOT4-350-S1	BTT4-350-S1	4	350-6	5.6	INS	INS	48
BTOT5-350-S1	BTT5-350-S1	5	350-6	6.6	1.25	1.375	56
BTOT6-350-S1	BTT6-350-S1	6	350-6	7.5	1.25	1.375	64
BTOT8-350-S1	BTT8-350-S1	8	350-6	9.3	1.25	1.375	80
BTOT2-500-S1	BTT2-500-S1	2	500-2	4.6	BARE	BARE	52
BTOT3-500-S1	BTT3-500-S1	3	500-2	5.7	1.00	1.515	63
BTOT4-500-S1	BTT4-500-S1	4	500-2	6.8	INS	INS	75
BTOT5-500-S1	BTT5-500-S1	5	500-2	7.9	1.25	1.50	87
BTOT6-500-S1	BTT6-500-S1	6	500-2	9.1	1.25	1.50	99
BTOT8-500-S1	BTT8-500-S1	8	500-2	11.3	1.25	1.50	122
BTOT2-750-S1	BTT2-750-S1	2	750-1/0	5.0	BARE	BARE	77
BTOT3-750-S1	BTT3-750-S1	3	750-1/0	6.3	1.188	1.75	94
BTOT4-750-S1	BTT4-750-S1	4	750-1/0	7.6	INS	INS	112
BTOT5-750-S1	BTT5-750-S1	5	750-1/0	8.9	1.188	1.75	129
BTOT6-750-S1	BTT6-750-S1	6	750-1/0	10.3	1.188	1.75	146
BTOT8-750-S1	BTT8-750-S1	8	750-1/0	13.4	1.188	1.75	171

#### Bare Terminal

- Material: 6061-T6 Aluminum
- Screws: Alloy 6262-T9
- Set Screws: Accepts 5/16" Hex Allen Wrench
- Screw Options: RB (Round Bottom), F or D Style
- Inhibitor Option: Suffix "G2"

#### Available with:

- Round Bottom Screws — Add Suffix "RB" to Catalog No.
- Flat Bottom Screws — Add Suffix "F" to Catalog No.
- Disc Pressure Pads — Add Suffix "D" to Catalog No.
- Add Suffix "G" for Inhibitor.

#### Screen Light Position:

- Modify Catalog Number for Street Light Addition, e.g., BTOT6 becomes BTOT61.

#### Slip-On Cover

Customize Your Look:

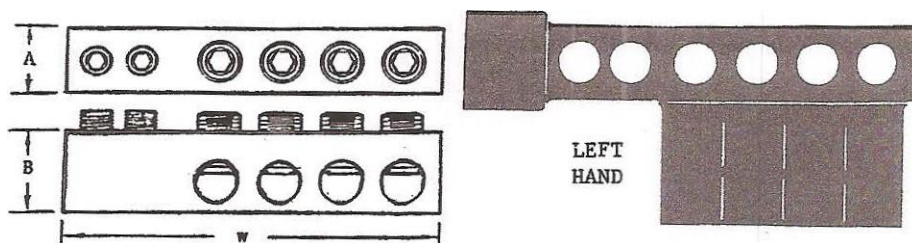
- Black Cover: Suffix "SO"
- Clear Cover: Suffix "SOC"

#### Insulated Terminal

Insulation Options:

- Black PVC: Suffix "DC"
- Clear PVC: Suffix "DCC"

## TYPE VBTOT & VBTT 5/8" – 11 STUD ALUMINUM MULTIPLE TERMINAL ALUMINUM AND COPPER CONDUCTORS



SLIP-ON	THREAD-ON	NO.COND.	RANGE	W	A	B	WEIGHT PERC
VBTOT2-250	VBTT2-250	2	250-6	3.5	BARE	BARE	30
VBTOT3-250	VBTT3-250	3	250-6	4.3	.903	1.141	38
VBTOT4-250	VBTT4-250	4	250-6	5.1	INS.	INS	46
VBTOT5-250	VBTT5-250	5	250-6	5.9	1.25	1.25	54
VBTOT6-250	VBTT6-250	6	250-6	6.8	1.25	1.25	61
VBTOT8-250	VBTT8-250	8	250-6	8.4	1.25	1.25	77
VBTOT2-350	VBTT2-350	2	350-6	3.8	BARE	BARE	35
VBTOT3-350	VBTT3-350	3	350-6	4.7	1.00	1.375	47
VBTOT4-350	VBTT4-350	4	350-6	5.6	INS	INS	58
VBTOT5-350	VBTT5-350	5	350-6	6.6	1.25	1.375	69
VBTOT6-350	VBTT6-350	6	350-6	7.5	1.25	1.375	81

SLIP-ON	THREAD-ON	NO.COND.	RANGE	W	A	B	WEIGHT PERC
VBTOT8-350	VBTT8-350	8	350-6	9.3	1.25	1.375	103
VBTOT2-500	VBTT2-50	2	500-2	4.6	BARE	BARE	55
VBTOT3-500	VBTT3-500	3	500-2	5.7	1.00	1.515	68
VBTOT4-500	VBTT4-500	4	500-2	6.8	INS	INS	83
VBTOT5-500	VBTT5-500	5	500-2	7.9	1.25	1.50	98
VBTOT6-500	VBTT6-500	6	500-2	9.1	1.25	1.50	112
VBTOT8-500	VBTT8-500	8	500-2	11.3	1.25	1.50	141
VBTOT2-750	VBTT2-750	2	750-1/0	5.0	BARE	BARE	81
VBTOT3-750	VBTT3-750	3	750-1/0	6.3	1.188	1.75	102
VBTOT4-750	VBTT4-750	4	750-1/0	7.6	INS	INS	122
VBTOT5-750	VBTT5-750	5	750-1/0	8.9	1.188	1.75	144
VBTOT6-750	VBTT6-750	6	750-1/0	10.3	1.188	1.75	165
VBTOT8-750	VBTT8-750	8	750-1/0	13.4	1.188	1.75	198

#### Terminal

- Material: 6061-T6 Aluminum
- Screw Alloy: 6262-T9 Aluminum

#### Available Variants:

- Round Bottom Screw: Add Suffix "RB."
- Flat Bottom Screw: Add Suffix "F."
- Disc Pressure Pad: Add Suffix "D."
- Inhibitor Option: Add Suffix "G."

#### Slip-On Cover Options:

- Black Cover: Add Suffix "SO."
- Clear Cover: Add Suffix "SOC."

#### Additional Requirements:

- Customer to provide Seal at Transformer Bushing.

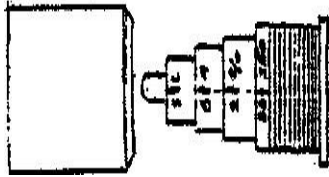
#### Insulated Terminal:

- To order an Insulated Terminal, add the Suffix "DC" to the Catalog Number.
- Specify RIGHT or Left-hand tightening.
- For Watertight operation, use Grommets and Double Sealing Sleeves.

#### Grommets and Double Sealing Sleeves:

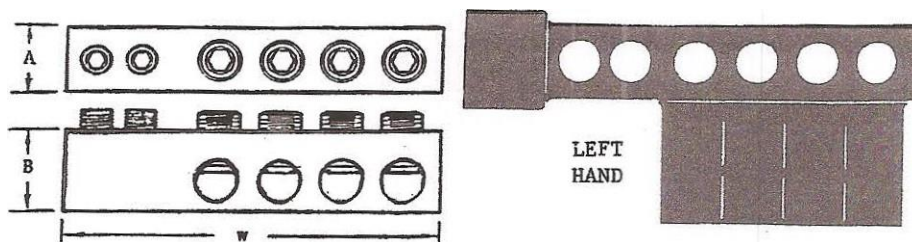
- To Order, add Suffix "SLGR" to the Catalog Number.

Catalog No.- Terminal Size:



- SLGR-250: Terminal Size 250
- SLGR-350: Terminal Size 350
- SLGR-500: Terminal Size 500
- SLGR-750: Terminal Size 750

## TYPE VBTOT & VBTT 1"-14 STUD ALUMINUM MULTIPLE TERMINAL ALUMINUM AND COPPER CONDUCTORS



SLIP-ON	THREAD-ON	NO.COND.	RANGE	W	A	B	WEIGHT PERC
VBTOT2-250-S1	VBTT2-250-S1	2	250-6	3.7			
VBTOT3-250-S1	VBTT3-250-S1	3	250-6	4.7			
VBTOT4-250-S1	VBTT4-250-S1	4	250-6	5.7			
VBTOT5-250-S1	VBTT5-250-S1	5	250-6	6.7			
VBTOT6-250-S1	VBTT6-250-S1	6	250-6	7.8			
VBTOT8-250-S1	VBTT8-250-S1	8	250-6	9.7			
VBTOT2-350-S1	VBTT2-350-S1	2	350-6	4.0			
VBTOT3-350-S1	VBTT3-350-S1	3	350-6	5.1			
VBTOT4-350-S1	VBTT4-350-S1	4	350-6	6.2			
VBTOT5-350-S1	VBTT5-350-S1	5	350-6	7.4			
VBTOT6-350-S1	VBTT6-350-S1	6	350-6	8.5			
VBTOT8-350-S1	VBTT8-350-S1	8	350-6	10.6			
VBTOT2-500-S1	VBTT2-500-S1	2	500-2	4.8			



SLIP-ON	THREAD-ON	NO.COND.	RANGE	W	A	B	WEIGHT PERC
VBTOT3-500-S1	VBTT3-500-S1	3	500-2	6.1			
VBTOT4-500-S1	VBTT4-500-S1	4	500-2	7.4			
VBTOT5-500-S1	VBTT5-500-S1	5	500-2	8.7			
VBTOT6-500-S1	VBTT6-500-S1	6	500-2	10.1			
VBTOT8-500-S1	VBTT8-500-S1	8	500-2	12.6			
VBTOT2-750-S1	VBTT2-750-S1	2	750-1/0	5.2			
VBTOT3-750-S1	VBTT3-750-S1	3	750-1/0	6.7			
VBTOT4-750-S1	VBTT4-750-S1	4	750-1/0	8.2			
VBTOT5-750-S1	VBTT5-750-S1	5	750-1/0	9.7			
VBTOT6-750-S1	VBTT6-750-S1	6	750-1/0	11.3			
VBTOT8-750-S1	VBTT8-750-S1	8	750-1/0	14.7	1.188	1.75	198

#### Terminal

- Material: 6061-T6 Aluminum
- Screw Alloy: 6262-T9 Aluminum

#### Available Variants:

- Round Bottom Screw: Add Suffix "RB."
- Flat Bottom Screw: Add Suffix "F."
- Disc Pressure Pad: Add Suffix "D."
- Inhibitor Option: Add Suffix "G."

#### Slip-On Cover Options:

- Black Cover: Add Suffix "SO."
- Clear Cover: Add Suffix "SOC."

#### Additional Requirements:

- Customer to provide Seal at Transformer Bushing.

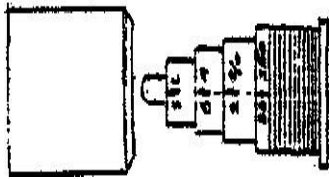
#### Insulated Terminal:

- To order an Insulated Terminal, add the Suffix "DC" to the Catalog Number.
- Specify RIGHT or Left-hand tightening.
- For Watertight operation, use Grommets and Double Sealing Sleeves.

#### Grommets and Double Sealing Sleeves:

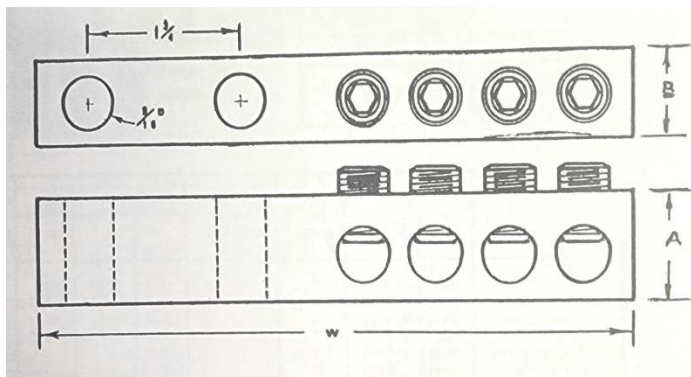
- To Order, add the Suffix "SLGR" to Catalog Number.

Catalog No.- Terminal Size:



- SLGR-250: Terminal Size 250
- SLGR-350: Terminal Size 350
- SLGR-500: Terminal Size 500
- SLGR-750: Terminal Size 750

## TYPE BT ALUMINUM MULTIPLE TERMINAL ALUMINUM AND COPPER CONDUCTORS



Catalog No. and Terminal Specifications:

CATALOG NO.	NO OF COND.	RANGE	MTNG HOLE DIA.	W	A	B	WEIGHT PERC	SCREW SIZE
BT2-250	2	250-6	9/16	5.2	1.141	.903	41	5/8-18
BT3-250	3	250-6	9/16	6.0	1.141	.903	47	5/8-18
BT4-250	4	250-6	9/16	6.8	1.141	.903	53	5/8-18
BT5-250	5	250-6	9/16	7.6	1.141	.903	59	5/8-18
BT6-250	6	250-6	9/16	8.4	1.141	.903	65	5/8-18
BT8-250	8	250-6	9/16	10.1	1.141	.903	75	5/8-18
BT2-350	2	350-6	9/16	5.2	1.375	1.00	52	5/8-18
BT3-350	3	350-6	9/16	6.0	1.375	1.00	60	5/8-18
BT4-350	4	350-6	9/16	6.9	1.375	1.00	68	5/8-18
BT5-350	5	350-6	9/16	7.9	1.375	1.00	76	5/8-18

CATALOG NO.	NO OF COND.	RANGE	MTNG HOLE DIA.	W	A	B	WEIGHT PERC	SCREW SIZE
BT2-250	2	250-6	9/16	5.2	1.141	.903	41	5/8-18
BT6-350	6	350-6	9/16	8.8	1.375	1.00	84	5/8-18
BT8-350	8	350-6	9/16	10.5	1.375	1.00	100	5/8-18
BT2-500	2	500-2	9/16	5.7	1.515	1.00	63	5/8-18
BT3-500	3	500-2	9/16	6.8	1.515	1.00	75	5/8-18
BT4-500	4	500-2	9/16	7.9	1.515	1.00	87	5/8-18
BT5-500	5	500-2	9/16	9.0	1.515	1.00	100	11/16-16
BT6-500	6	500-2	9/16	10.2	1.515	1.00	113	11/16-16
BT8-500	8	500-2	9/16	12.4	1.515	1.00	134	11/16-16
BT2-750	2	750-1/0	9/16	6.0	1.75	1.188	96	11/16-16
BT3-750	3	750-1/0	9/16	7.3	1.75	1.188	113	11/16-16
BT4-750	4	750-1/0	9/16	8.6	1.75	1.188	131	11/16-16
BT5-750	5	750-1/0	9/16	9.9	1.75	1.188	148	3/4-16
BT6-750	6	750-1/0	9/16	11.2	1.75	1.188	165	3/4-16
BT8-750	8	750-1/0	9/16	13.9	1.75	1.188	190	3/4-16

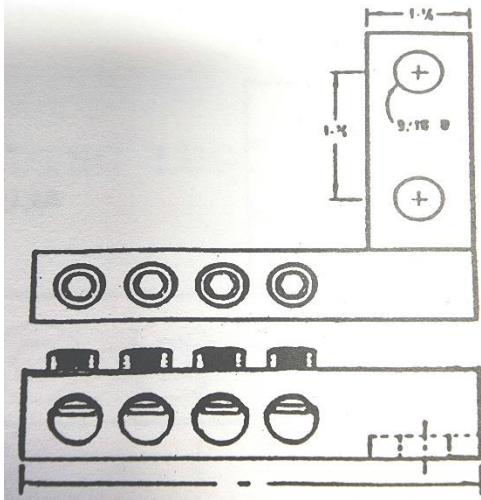
#### Terminal

- Material: 6061-T6 Aluminum
- Screw Alloy: 6262-T9 Aluminum

#### Available Variants:

- Round Bottom Screw: Add Suffix "RB."
- Flat Bottom Screw: Add Suffix "F."
- Disc Pressure Pad: Add Suffix "D."
- Inhibitor Option: Add Suffix "G."

## TYPE B2L ALUMINUM MULTIPLE CONDUCTOR LUG



### Catalog No.- Conductor Terminal

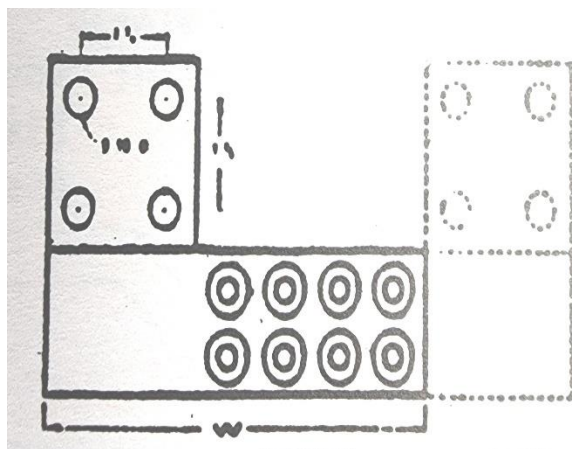
- Material: 6061-T6 Aluminum
- Screw Alloy: 6262-T9

Catalog No.	Conductor Range (AWG-MCM)	Number of Conductors	Width (W)	Weight (lbs. per 100)
B2L2-250	250-6	2	3.2	45
B2L3-250	250-6	3	4.0	51
B2L4-250	250-6	4	4.8	58
B2L5-250	250-6	5	5.7	63
B2L6-250	250-6	6	6.4	69
B2L8-250	250-6	8	8.0	81
82L2-350	350-6	2	3.3	46
B2L3-350	350-6	3	4.2	54
B2L4-350	350-6	4	5.1	62
B2L5-350	350-6	5	6.1	70
82L6-350	350-6	6	7.0	78
B2L8-350	350-6	8	8.9	94
B2L2-500	500-2	2	3.8	68
B2L3-500	500-2	3	4.9	79
B2L4-500	500-2	4	6.1	91

Catalog No.	Conductor Range (AWG-MCM)	Number of Conductors	Width (W)	Weight (lbs. per 100)
B2L5-500	500-2	5	7.2	103
B2L6-500	500-2	6	8.3	115
B2L8-500	500-2	8	10.6	138

#### Available Configurations:

- Round Bottom Screws: Add Suffix "RB"
- Flat Bottom Screws: Add Suffix "F"
- Disc Pressure Pads: Add Suffix "D"
- Inhibitor Option: Add Suffix "G"



#### TYPE B4L ALUMINUM MULTIPLE CONDUCTOR LUG

#### Catalog No.- Conductor Terminal

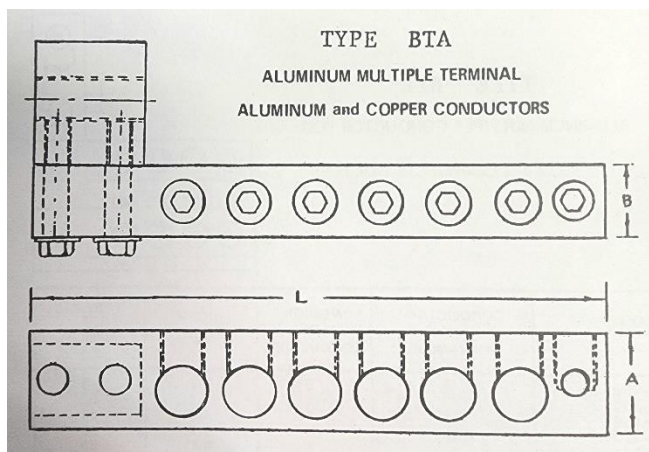
- Material: 6061-T6 Aluminum
- Screw Alloy: 6262-T9

Left Catalog No.	Right Catalog No.	Number of Conductors	Conductor Range (AWG-MCM)	Width (W)
B4L4-500L	B4L4-500R	4	500-2	7.8
B4L6-500L	B4L6-500R	6	500-2	9.0
B4LB-500L	B4L8-500R	8	500-2	11.2

Left Catalog No.	Right Catalog No.	Number of Conductors	Conductor Range (AWG-MCM)	Width (W)
B4L4-750L	B4L4-750R	4	750-1/0	8.7
B4L6-750L	B4L6-750R	6	750-1/0	11.3
B4L8-750L	B4L8-750R	8	750-1/0	14.0

#### Available Configurations:

- Round Bottom Screws: Add Suffix "RB"
- Flat Bottom Screws: Add Suffix "F"
- Disc Pressure Pads: Add Suffix "D"
- Inhibitor Option: Add Suffix "G"



#### TYPE BTA ALUMINUM TERMINAL

##### Terminal Bar Only

- Material: 6061-T6 Aluminum
- Screw Alloy: 6262-T

Catalog No.	No. Cond.	Conductor Range	L	A	B
BTA4-250	4	250-6	5.8	1.14	.9
BTA6-250	6	250-6	6.7	1.14	.9
BTA8-250	8	250-6	7.6	1.14	.90
BTA4-350	4	350-6	6.3	1.38	1.0
BTA6-350	6	350-6	7.2	1.38	1.0
BTA8-350	8	350-6	8.1	1.38	1.0
BTA4-500	4	500-2	7.3	1.51	1.0
BTA6-500	6	500-2	8.2	1.51	1.0
BTA8-500	8	500-2	9.1	1.51	1.0

## Length Adjustment:

- Length "L" is specified without St. Lt. Tap. Please add 3/4" for St. Lt.

## St. Lt. Position:

- For St. Lt. position, include "I" in Catalog No. For instance, BTA61-250.

## Complete Terminal Stud Adapter:

- When referring to the Complete Terminal Stud Adapter, append the suffix "S1" to the Terminal Bar No. For example, BTR6-350-S1.

## Screw Types:

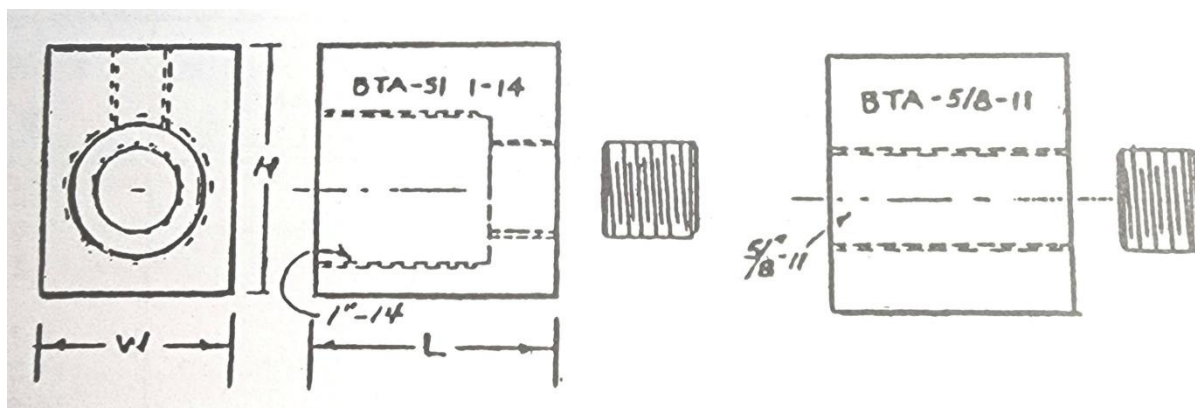
- Round Bottom Screws: Indicate with the suffix "RB."
- Flat Bottom Screws: Indicate with the suffix "F."

## Pressure Pad Type:

- Disc Pressure Pads: Specify with the suffix "D."

## Inhibitor Option:

- To include the inhibitor option, append the suffix "G."



## Adapter Only

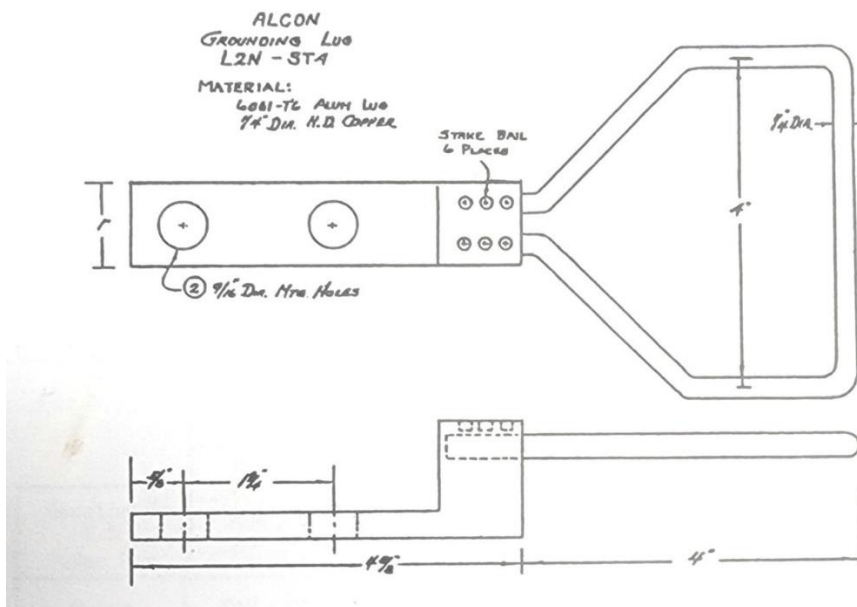
- Material: 6061-T6 Aluminum

- Screw Alloy: 6262-T9

Catalog No.	Stud Size	H	W	L
BTA-S1	1"-14	1.6	1.3	1.5
BTA-58	5/8-11	1.6	1.3	1.5

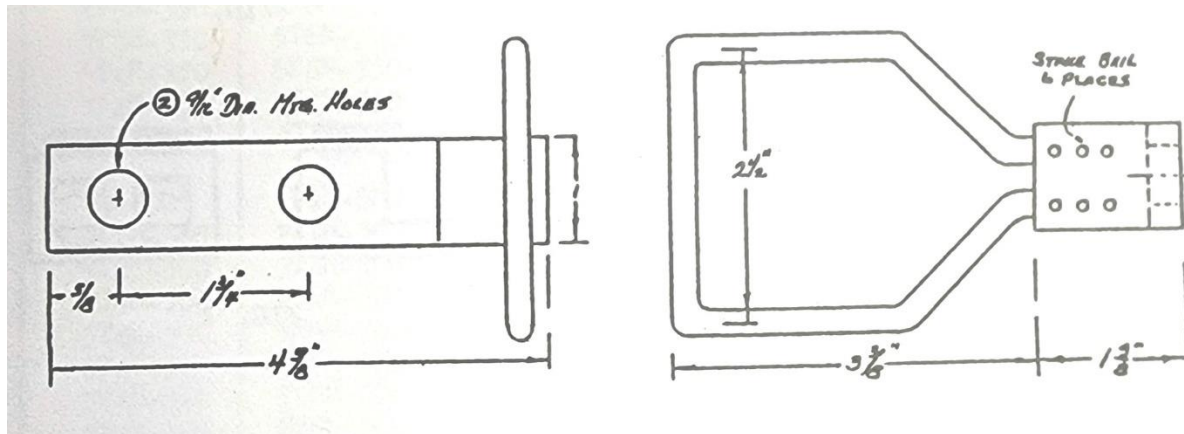
Catalog No. includes Locking Screw

### Type L2N Grounding Lugs



- Material: 6061-T6 Aluminum





- Material: 6061-T6 Aluminum

### TYPE TP - ALUMINUM SINGLE CONDUCTOR LUG - PRESSURE PAD TYPE



Catalog No.	Conductor Range	T	L	W	H
TP-250	250-6	.3	1.4	1.0	1.4
TP-350	350-6	.3	1.5	1.2	1.6
TP-500	500-2	.4	1.5	1.3	1.8

Catalog No.	Conductor Range	T	L	W	H
TP-750	750-0	.5	1.6	1.6	2.1

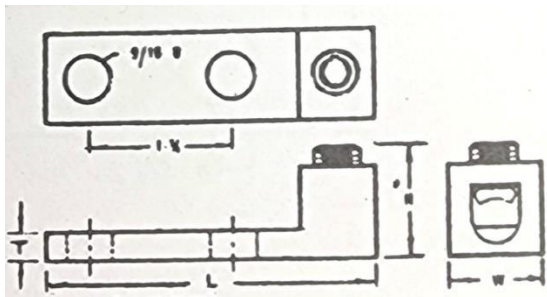
Material: 6061-T6 Aluminum

Screw Alloy: 6262-T9

Fabricated from 6061—T6 Aluminum. Screw Alloy 6262—T9.

Add Suffix "V" for Grease

### TYPE TZP - ALUMINUM SINGLE CONDUCTOR LUG - PRESSURE PAD TYPE - NEMA2: HOLE PAD



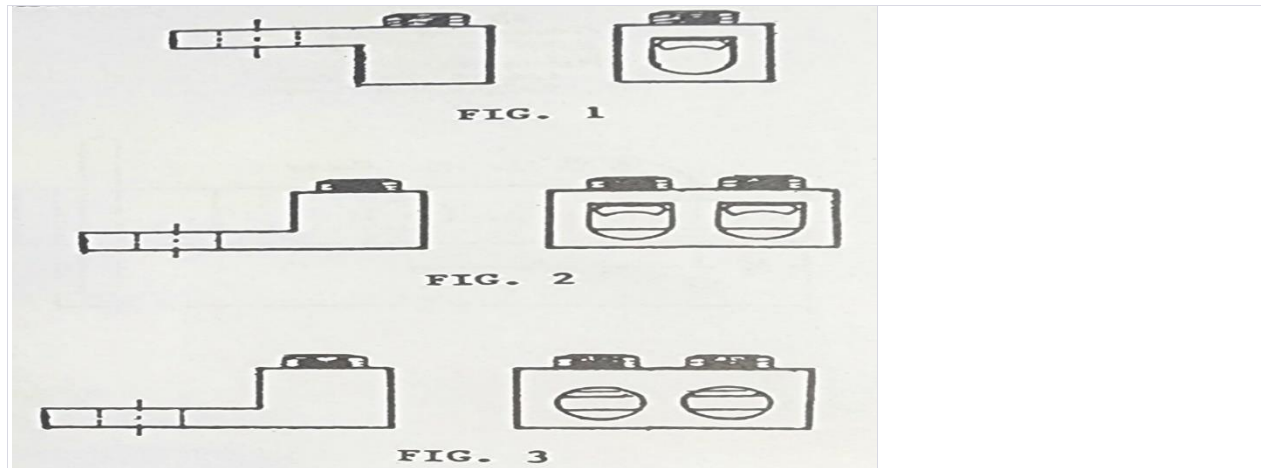
- Material: 6061-T6 Aluminum
- Screw Alloy: 6262-T9

Catalog No.	Conductor Range (AWG-MCM)	T	L	W	H
T2P-250	250-6	0.3	4.2	1.0	1.4
T2P-350	350-6	0.3	4.2	1.2	1.6
T2P-500	500-2	0.4	4.2	1.3	1.8
T2P-750	750-0	0.5	4.4	1.6	2.1

Fabricated from 6061-T6 Aluminum. Screw Alloy 6262-T9.

Add Suffix "G" for Grease.

## METER TERMINALS



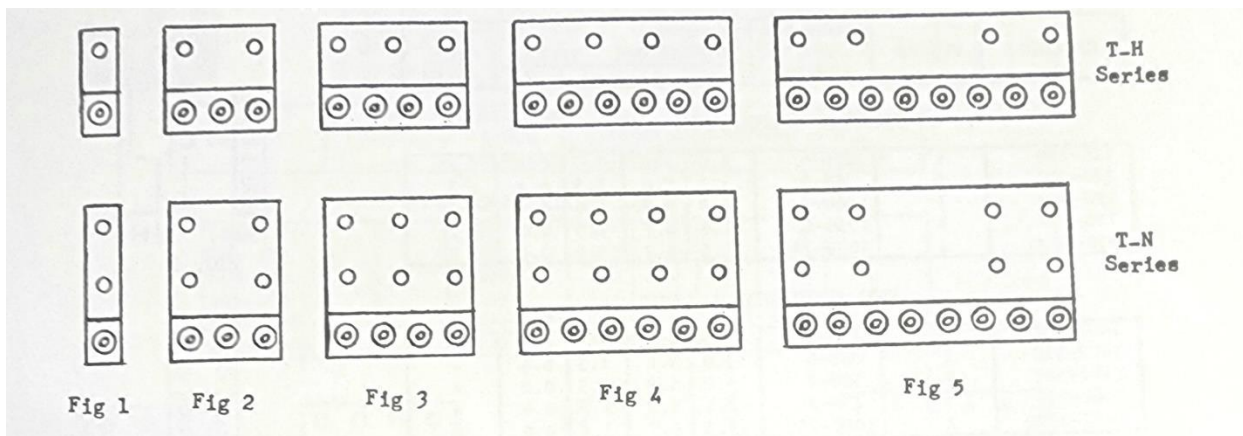
- Material: 6061-T6 Aluminum
- Screw Alloy: 6262-T9 Aluminum

Catalog No.	Figure	Conductor Range (KCM-AWG)	Mtg. Hole
TP-250R	1	250-6	0.43
TP-350R	1	350-6	0.43
TP-500R	1	500-2	0.43
2TP-250	2	250-6	0.43
2TP-350	2	350-6	0.43
2TP-500	2	500-2	0.43
2T-250	3	250-6	0.43
2T-350	3	350-6	0.43
2T-500	3	500-2	0.43

*Specify Mtg. The hole size is different from the standard.*

*Add Suffix "G" for Inhibitor.*

## TYPE T-H & T-N LUGS



Type T-H Single Row Mounting, "J" Bolts, NEMA Spacing

Type T-N Double Row Mounting, Bolts, NEMA Spacing

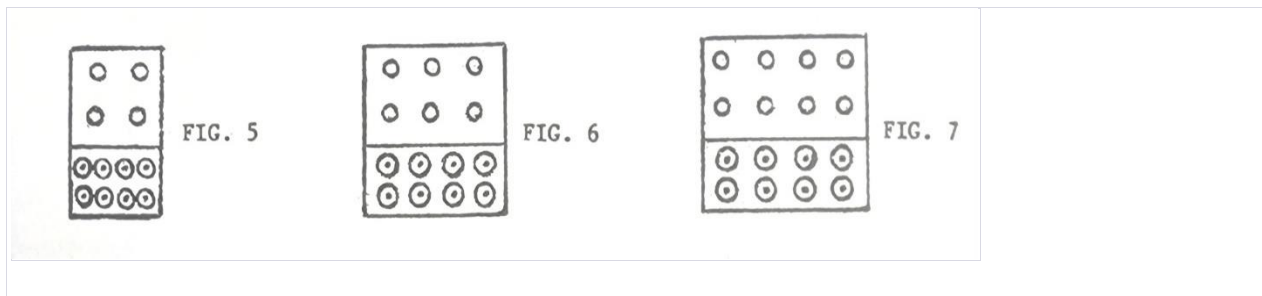
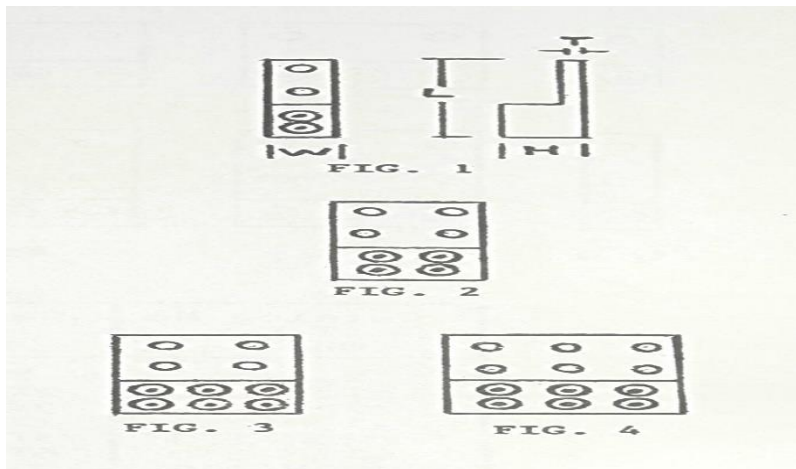
T-H Series:

Catalog No.	No. Cond.	FIG.	Cond. Range (KCM-AWG)	Length (L)	Thick. Bus
T-250	1	1	250-6	1.1	.375
2T2H-250	2	2	250-6	3.0	.375
3T2H-250	3	2	250-6	3.0	.375
4TJH-250	4	3	250-6	4.7	.375
5TJH-250	5	3	250-6	4.7	.375
6T4H-250	6	4	250-6	6.5	.375
7T4H-250	7	4	250-6	6.5	.375
8T4H-250	8	4	250-6	6.7	.375
T-350	1	1	350-6	1.1	.375
2T2H-350	2	2	350-6	3.0	.375
3T2H-350	3	2	350-6	3.0	.375
4T3H-350	4	3	350-6	4.7	.375
5T3H-350	5	3	350-6	4.7	.375
6T4H-350	6	4	350-6	6.5	.375
7T4H-350	7	4	350-6	6.5	.375
8T4H-350	8	5	350-6	8.2	.375
35-500	1	1	500-2	1.2	.375

Catalog No.	No. Cond.	FIG.	Cond. Range (KCM-AWG)	Length (L)	Thick. Bus
2T2H-500	2	2	500-2	3.0	.375
3T2H-500	3	2	500-2	3.0	.375
4T3H-500	4	3	500-2	4.7	.375
5T4H-500	5	4	500-2	6.5	.375
6T4H-500	6	4	500-2	6.5	.375
7T4H-500	7	5	500-2	8.2	.375
8T4H-500	8	5	500-2	9.2	.375

*Fabricated from 6061-T6 aluminum. Screw Alloy 6262-T9.*  
*Available with: Round Bottom Screws - Add suffix "RB".*  
*Flat Bottom Screws - Add suffix "F".*  
*Disc Pressure Pads - Add suffix "D".*  
*Add suffix "G" for Inhibitor.*

### TYPE TG ALUMINUM LUGS – General Purpose



Mounting Holes: 9/16 in. dia. drilled on 1-3/4-inch centers

Single Conductor Lugs:

Catalog No.	FIGURE	Conductor Range	W	L	H	T	No. Mtg. hole
T2G-250	1	250-6	1.0	5.8	1.5	.4	2
T2G-350	1	350-6	1.2	5.8	1.5	.4	2
T2G-500	1	500-2	1.3	5.8	1.5	.4	2
T2G-750	1	750-0	1.6	6.7	1.9	.6	2
T2G-1000	1	1000-250	1.8	6.7	1.9	.6	2

Two Conductor Lugs:

Catalog No.	FIGURE	Conductor Range	W	L	H	T	No. Mtg. hole
T4G2-250	2	250-6	3.0	5.8	1.5	.4	4
T4G2-350	2	350-6	3.0	5.8	1.5	.4	4
T4G2-500	2	500-2	3.0	5.8	1.5	.4	4
T4G2-750	2	750-0	3.1	6.7	1.9	.6	4
T4G2-1000	2	1000-250	3.3	6.7	1.9	.6	4

Three Conductor Lugs:

Catalog No.	FIGURE	Conductor Range	W	L	H	T	No. Mtg. hole
T4G3-250	3	250-6	3.0	5.8	1.5	.4	4
T4G3-350	3	350-6	3.0	5.8	1.5	.4	4
T4G3-500	3	500-2	3.6	5.8	1.5	.4	4
T4G3-750	3	750-0	4.1	6.7	1.9	.6	4
T6G3-750	4	750-0	4.8	6.7	1.9	.6	6
T4G3-1000	3	1000-250	4.8	6.7	1.9	.6	4
T6G3-1000	4	1000-250	4.8	6.7	1.9	.6	6

Four Conductor Lugs:

Catalog No.	FIGURE	Conductor Range	W	L	H	T	No. Mtg. hole
T4G4-250	5	250-6	3.4	5.8	1.5	.4	4
T6G4-350	6	350-6	4.7	5.8	1.5	.4	6
T6G4-500	6	500-2	4.7	5.8	1.5	.4	6
T6G4-750	6	750-0	5.4	6.7	1.9	.6	6
T8G4-750	7	750-0	6.5	6.7	1.9	.6	8

Catalog No.	FIGURE	Conductor Range	W	L	H	T	No. Mtg. hole
T6G4-1000	6	1000-250	6.5	6.7	1.9	.6	6
T8C4-1000	7	1000-250	6.5	6.7	1.9	.6	8

They are fabricated from 6061-T6 aluminum. Screw Alloy 6262-T9.

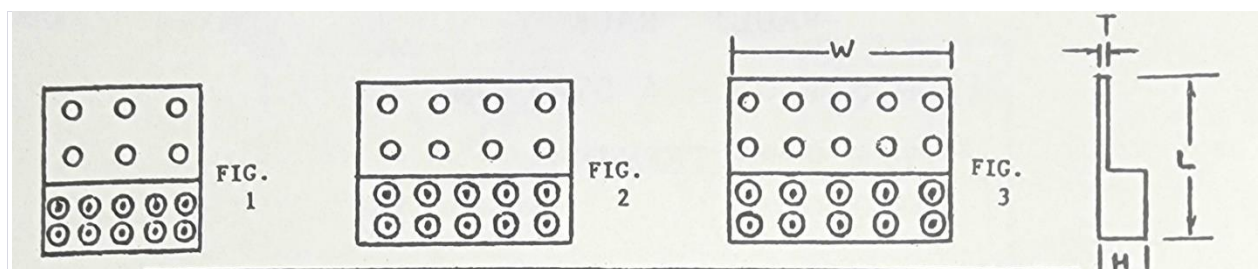
Available with: Round Bottom Screws - Add suffix "RB".

Flat Bottom Screws - Add suffix "F".

Disc Pressure Pads - Add the suffix "D".

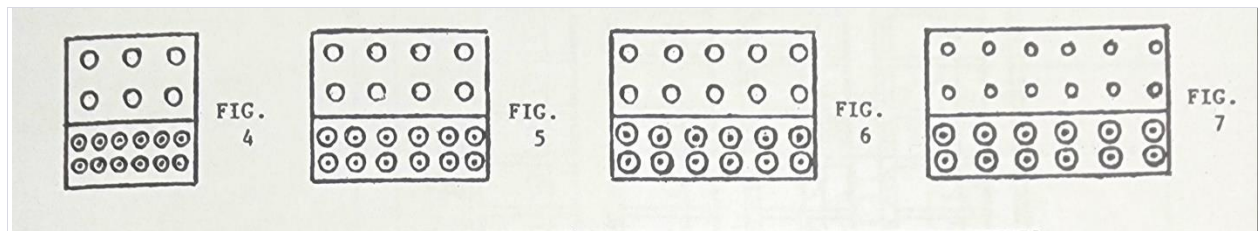
Add suffix "G" for Inhibitor.

### TYPE TG ALUMINUM LUGS:



#### Five Conductor Lugs:

Catalog No.	FIGURE	Conductor Range	W	L	H	T	No. Mtg. hole
T6G5-250	1	250-6	4.7	5.8	1.5	.4	6
T6G5-350	1	350-6	4.8	5.8	1.5	.4	6
T6G5-500	1	500-2	5.8	5.8	1.5	.4	6
T8G5-750	2	750-0	6.8	6.7	1.7	.6	8
T8G5-1000	2	1000-250	7.8	6.7	1.7	.6	8
T10G5-1000	3	1000-250	8.3	6.7	1.7	.6	10



Six Conductor Lugs:

Catalog No.	FIGURE	Conductor Range	W	L	H	T	No. Mtg. hole
T6G6-250	4	250-6	5.1	5.8	1.5	.4	6
T8G6-350	5	350-6	6.5	5.8	1.5	.4	8
T8C6-500	5	500-2	7.0	5.8	1.5	.4	8
T10G6-750	6	750—0	8.2	6.7	1.9	.6	10
T12G6-1000	7	1000-250	10.0	6.7	1.9	.6	12

1.5



Eight Conductor Lugs:

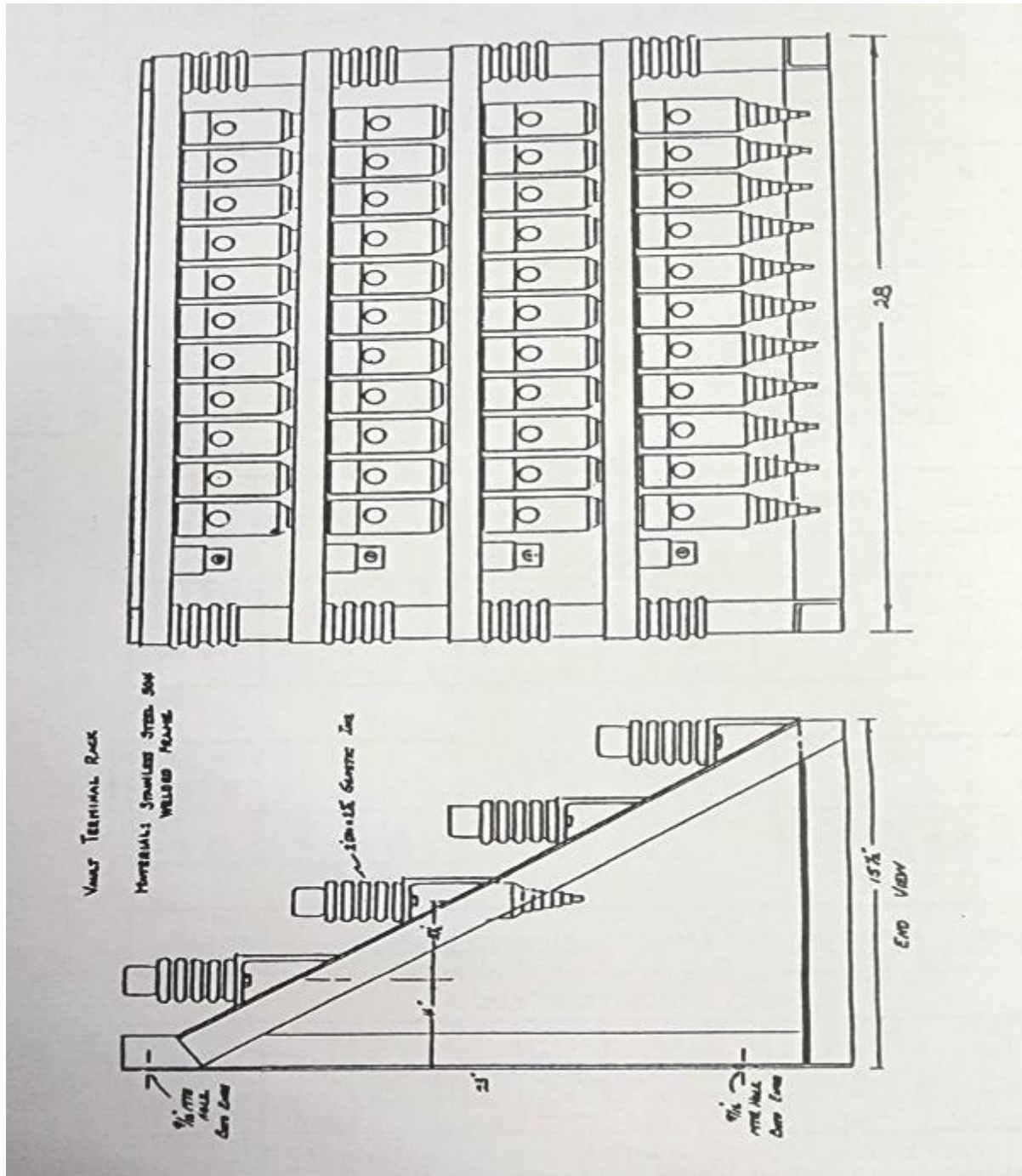
Catalog No.	FIGURE	Conductor Range	W	L	H	T	No. Mtg. hole
T8G8-250	8	250-6	6.7	5.8	1.5	.4	8
T8C8-350	8	350-6	7.6	5.8	1.5	.4	8
T8G8-500	8	500-2	10.0	5.8	1.5	.4	8
T12G8-750	9	750-0	10.7	6.7	1.9	.6	12
T12G8-1000	9	1000-250	12.3	6.7	1.9	.6	12

Fabricated from 6061-T6 aluminum. Screw Alloy 6262-T9. Available with:

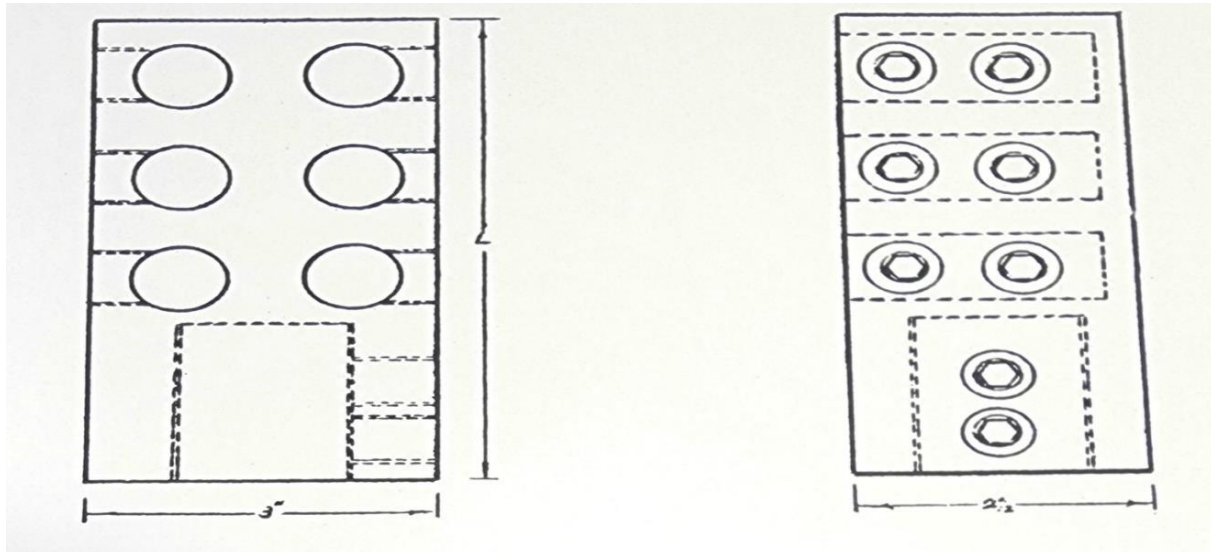
- Round Bottom Screws - Add suffix "RB"
- Flat Bottom Screws - Add suffix "F"
- Disc Pressure Pads - Add suffix "D"
- Add suffix "G" for Inhibitor



**VAULT RACK 12 POSITION – 4 STATION TYPE VPBR TERMINALS**

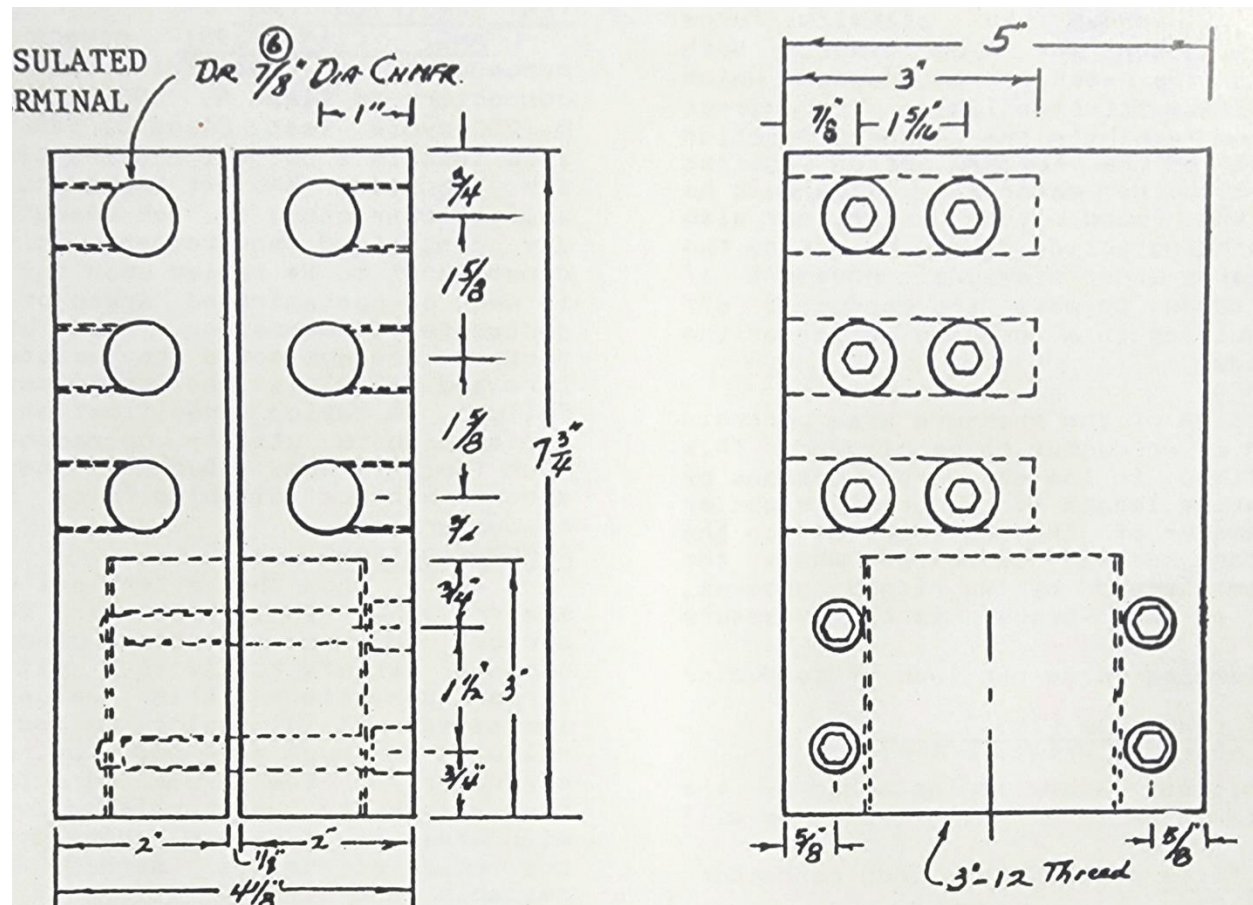


## TYPE BTOT 1.5" INSULATED STUD TERMINALS



1. BTOT4-500-1.5"-12: This terminal has a length of 4.7 inches and features a 1-1/2"-12 insulated stud.
2. BTOT6-500-1.5"-12: This terminal has a length of 6.0 inches and features a 1-1/2"-12 insulated stud.

## TYPE BTOT 13"-12 INSULATED STUD TERMINALS



1. BTOT4-500-3"-12: This terminal has a length of 6.2 inches and features a 3"-12 insulated stud.
2. BTOT6-500-3"-12: This terminal has a length of 7.8 inches and features a 3"-12 insulated stud.

*Terminal: Insulated with PVC. Complete with Nordel closure plugs for all screw openings, grommets, and double-sealing sleeves for all conductor openings.*

**For inquiries regarding alternative combinations or specific requirements, we invite you to reach out to Alcon Connectors at your earliest convenience. Our dedicated team is ready to provide professional assistance and address any unique needs you may have. Please feel free to contact us at (513) 722-1037, and we look forward to serving you with our expertise and tailored solutions.**

## **ALCON BEST PRACTICES :** [GUIDELINES FOR A 6000 CONNECTION](#)

### [Torque Application:](#)

- Apply torque to a high value as per the recommended specifications.

### [Optimizing Clamping Force:](#)

- Maximize clamping force per inch of conductor length.

### [User Control- Torque Application:](#)

- The initial parameter is controlled by the user of a bolted connector.
- It is recommended to use a ratchet wrench for tightening, preferably with a 12-inch handle.
- For free-standing terminals, employ a secure method to hold the terminal, ensuring stable torque values:

Conductor	Torque (INCM-LBS.)	Torque (FOOT-LBS.)
250-350	360	30
500	420	35
750	480	40

- Multiple retightening attempts may be necessary for stability.

### [Manufacturer's Role- Design Function:](#)

- The second parameter is a design function controlled by the manufacturer.

- Critical factors include the type and size of the bolt or set screw and the design of the pressure area.

#### Clamping Force Analysis:

- Refer to Figure 1 for an overview of clamping force generated by common set screw types.
- The pressure pad design is the most efficient, boasting the lowest friction loss.
- Direct contact screws exhibit higher friction loss due to turning action against softer conductor material.
- Note that the round bottom design may induce a binding action between convex surfaces, causing movement of the conductor.

#### Pressure Area Design:

- The design of the pressure area determines the length of the conductor to be clamped.
- In set screw designs, the length is dictated by the diameter or length of the pressure pad or the diameter of the round bottom in direct contact screws.
- Designs with two ridged grooves fix the pressure area based on the length of the groove.

#### Calculation of Clamping Force per Inch:

- Clamping force per inch of conductor is calculated as follows:  

$$\text{Clamping Force(lbs.)} = \text{Screw Force(lbs.)} \times \text{Length of Pressure Area}$$

$$\text{Clamping Force(lbs.)} = \text{Length of Pressure Area} \times \text{Screw Force(lbs.)}$$

#### Optimal Clamping Force Values:

- The pressure pad screw type typically achieves the highest value, e.g., 3,000 lbs. force per inch of conductor with a 0.5" diameter pad.
- A ballpoint screw might have 1,500 lbs. force per inch with a 0.6" diameter ball.
- For a parallel groove clamp with 2 grooves, 2" long, and 3,000 lbs. force, the clamping force per inch is 750 lbs.

#### Considerations for Vise Types:

- Vise types, like two-piece hot line clamps, may experience significant binding, reducing clamping force by up to 50%.
- Clamping force per inch of conductor is generally around 1,000 lbs. or less.

By adhering to these guidelines, you can ensure a reliable and effective 6000 connection.

### Optimal Screw and Clamp Design Considerations:

#### Bail Point Screw:

- Typically generates 1,500 lbs. force per inch with a 0.6" diameter.
- Provides effective clamping with a turning action against the conductor material.

#### Parallel Groove Clamp (2 Grooves, 2" Long, 3,000 lbs. Force):

- Clamping force per inch is 750 lbs., delivering secure connections.
- Ensures stability and reliability in various applications.

#### Vise Types (e.g., Two-Piece Hot Line Clamps):

- Features considerable binding of sliding parts.
- Results in a reduction of clamping force, often by as much as 50%.
- Clamping force per inch of conductor is generally around 1,000 lbs. or less.

#### Test Specifications:

- ANSI C119.4-1992 covers tests for utility bolted connectors, categorized as Class A (500 cycles), Class B (250 cycles), and Class C (125 cycles).
- This test primarily involves current cycling in a dry, constant ambient temperature.
- However, it may not fully represent real-world conditions, especially in wet or contaminated environments.
- Utility connectors are often exposed to moisture, a leading cause of failure.

#### Design Considerations for High-Fault Areas:

- Terminals should be designed to focus on high-fault areas, specifying a minimum clamping force per inch of conductor.
- Tests indicate that a terminal with a minimum of 2,500 lbs. force per inch, operating on a seven-strand conductor, performs well in salt-laden environments.
- For larger conductors, it is advisable to increase the clamping force.



- Designing terminals with as much as 6,600 lbs. force per inch is feasible, especially for larger conductors.
- Set screws with pressure pads offer an economical and reliable solution for achieving long-life operations in various environments.

### **ALCON, INC. Policy:**

- Alcon, Inc. supplies terminals according to customer specifications.
- Assumes that users have considered the desired service life for the operating environment.
- Offers recommendations on design and performance for any application.
- Provides alternate designs, including various screw types, for users to select based on their specific requirements.
- Emphasizes that the choice of the proper design for the application rests with the customer.

By following these guidelines and considering the specific requirements of the application, users can achieve secure and reliable electrical connections.